



ADVERTISING CONCEPTS

2008



- awards & ribbons
- post-it notes & cubes
- food service Products
- drinkware
- calendars
- magnets

Design and Manufacture of Anything With Ink on It!

www.dayledesigns.biz • dayledesigns@comcast.net
8518 Kimmie St. SW • Olympia, Washington 98512

Phone/Fax **360-352-4051**



Post-it® Notes & Cubes.....	3-5
Rotary File Cards & Membership Cards.....	6
Magnets.....	7-8
Bumper Stickers & Decals.....	9-11
Writing Instruments.....	12-14
Healthcare Promotions.....	15
Office Essentials.....	16-17
Calendars.....	18-19
Awards & Ribbons.....	20-21
Drinkware.....	22-24
Food Service Products.....	25
Events & Promotions.....	26-31
Bags.....	32-33
Key Rings.....	34
General Instructions.....	35

Satisfaction Guaranteed!

Every product is backed by our 100% satisfaction guarantee and promise to you. If we don't do it right, we'll make it right.

Printed January 2008 • NMKBC104

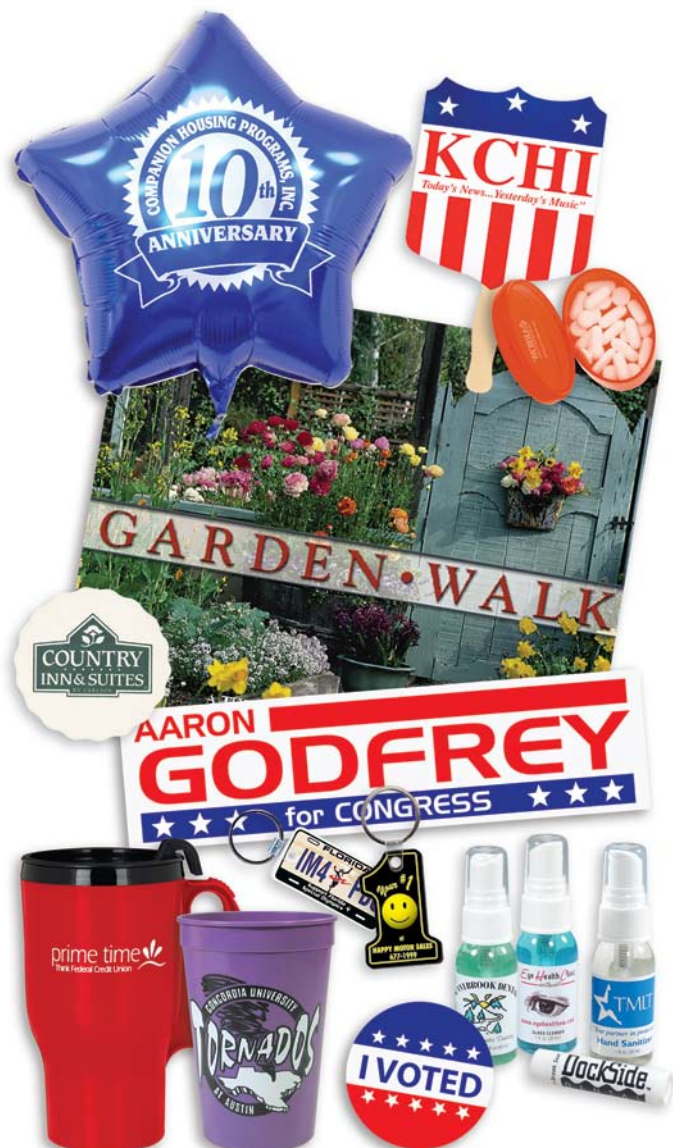
Prices, conditions and specifications are subject to change without notice. Colors of products illustrated are approximations.

Promote Your Business in Style!

The NEW 2008 Advertising Concepts Catalog contains an exciting array of the most popular advertising and promotional items in the industry. Plus, we listened and added the new products most requested by our customers.

We designed our catalog to be easy to use with hassle free ordering. All the information you need to order is shown with the product. Select the quantity, size, shape, ink and product color and you are ready to place your order. Ordering is easy, so give us a call today!

Need an advertising specialty item that is not in the catalog? We are constantly adding to our product line, so call today for that hard to find promotional item.



Low Minimum Post-it® Notes - Standard Paper

Size	Adhesive Placement	20	Price Per Pad		
			60	100	340
3" x 3" 50 Sheets*	3" edge	3.09	2.00	1.35	1.10

(R)

Size	Adhesive Placement	16	Price Per Pad		
			64	96	336
4" x 3" 50 Sheets†	4" edge	3.09	2.00	1.35	1.10
4" x 6" 50 Sheets†	4" edge	4.45	3.14	2.27	1.67

(R)

Low Minimum Post-it® Notes - Neon Paper

Size	Adhesive Placement	20	Price Per Pad		
			60	100	340
3" x 3" 50 Sheets*	3" edge	3.62	2.35	1.59	1.30

(R)

Size	Adhesive Placement	16	Price Per Pad		
			64	96	336
4" x 3" 50 Sheets†	4" edge	3.62	2.35	1.59	1.30
4" x 6" 50 Sheets†	4" edge	5.24	3.69	2.67	1.95

(R)

*Must be ordered in multiples of 20 pads.
†Must be ordered in multiples of 16 pads.

Typeset: \$1.50(V) per line over 5 lines.

Fax/E-mail Proof: \$15.00(V) Add 2 working days.

Production: 5 working days after all approvals.

Standard Paper Colors: White, Canary Yellow®, Light Gray, Sky Blue, Cream, Carnation Pink, Spring Green.

Neon Paper Colors: Ultra Grape, Neon Pink, Ultra Yellow, Peach Azalea, Neon Lime, Neon Orange. Black ink is recommended on neon stock.

Ink Colors: Black, 185 Red, 300 Blue. 1-color imprint only.

Screens: Minimum 10%. No screened text.

Bleeds: Not available on low minimums.

Note: *Imprinting in the adhesive area can cause picking of the ink from the adhesive above. Orders will not be reprinted based on these circumstances.*

Discontinued Stock: *Pale Blue, Light Pink and Watermelon stocks are available in limited quantities.*



Faster Production Time!

Die-Cut Post-it® Notes - Cut from a 4" x 4" Pad

Item Number	Description	Imprint Colors	Price Per Pad			
			500	1,000	2,500	5,000
31593251	25 sheets per pad	1	1.49	1.01	0.77	0.69
31593252	25 sheets per pad	2	2.03	1.26	0.84	0.71
31593501	50 sheets per pad	1	1.95	1.55	1.22	1.17
31593502	50 sheets per pad	2	2.54	1.82	1.33	1.24

(R)

Fax/E-mail Proof: \$15.00(V) Add 5 working days.

PMS: No charge except for metallic, fluorescent or special mix.

Neon Upcharge: Add an additional 15% to the above prices for Neon Paper Colors.

Bleeds: Call for pricing.

Copy Change: \$30.00(V) per change under 10,000 pads. 500 pad minimum per change. Copy change location and color must remain the same. For two-color imprints, copy changes are allowed with only one of the two colors.

Production: 9 working days after all approvals.

Standard Paper Colors: White, Canary Yellow®, Gray, Sky Blue, Carnation Pink, Spring Green, Cream.

Neon Paper Colors: Ultra Yellow, Neon Lime, Neon Orange, Neon Pink, Peach Azalea, Ultra Grape.

Die-Cut Shapes: (Stock graphics available on some shapes. Call for template.)



#28

Heart
3³/₁₆" x 3¹/₄"



#29

House
4" x 3¹/₁₆"



#31

Tooth
3" x 3"



#33

Bulb/Balloon
2¹/₁₆" x 3¹/₁₆"



#64

Shopping Bag
3¹/₁₆" x 3¹/₁₆"



#66

T-Shirt
3⁷/₁₆" x 3¹/₁₆"



#67

Mortar & Pestle
3¹/₁₆" x 3⁷/₁₆"



Call for pricing on die-cut shapes!



**Call for pricing.
Post-it® tape flag pens
and highlighters!**



3" x 3" Post-it® Notes

Item Number	Description	Colors	500	Price Per Pad		
				1,000	2,500	5,000
31590002	25 Sheet Pad	1	0.87	0.69	0.51	0.47
	25 Sheet Pad	2	1.33	0.95	0.65	0.59
31590003	50 Sheet Pad	1	1.28	1.08	0.90	0.83
	50 Sheet Pad	2	1.89	1.37	1.10	0.99
31591000	100 Sheet Pad	1	1.99	1.89	1.63	1.45
	100 Sheet Pad	2	2.65	2.29	1.88	1.68

(R)

4" x 3" Post-it® Notes

Item Number	Description	Colors	500	Price Per Pad		
				1,000	2,500	5,000
31590004	25 Sheet Pad	1	0.74	0.57	0.50	0.44
	25 Sheet Pad	2	1.22	0.84	0.63	0.56
31590005	50 Sheet Pad	1	1.16	0.96	0.89	0.80
	50 Sheet Pad	2	1.67	1.27	1.06	0.94
31593000	100 Sheet Pad	1	1.86	1.69	1.62	1.45
	100 Sheet Pad	2	2.43	2.03	1.85	1.67

(R)

4" x 6" Post-it® Notes

Item Number	Description	Colors	500	Price Per Pad		
				1,000	2,500	5,000
31590006	25 Sheet Pad	1	1.15	0.95	0.89	0.79
	25 Sheet Pad	2	1.73	1.33	1.09	0.97
31590007	50 Sheet Pad	1	1.76	1.58	1.50	1.37
	50 Sheet Pad	2	2.56	1.99	1.75	1.67
31592000	100 Sheet Pad	1	3.11	2.91	2.80	2.68
	100 Sheet Pad	2	3.98	3.53	3.20	2.99

(R)

Fax/E-mail Proof: \$15.00(V) Add 5 working days.

PMS: No charge except for metallic, fluorescent or special mix.

Neon Upcharge: Add an additional 15% to the above prices for Neon Paper Colors.

Bleed Charges: Call for pricing.

Copy Change: \$30.00(V) per change under 10,000 pads. 500 pad minimum per change.

Copy change location and color must remain the same. For two-color imprints, copy changes are allowed with only one of the two colors.

Production: 9 working days after all approvals.

Standard Paper Colors: White, Canary Yellow®, Gray, Sky Blue, Carnation Pink, Spring Green, Cream.

Neon Paper Colors: Ultra Yellow, Ultra Grape®, Neon Lime, Neon Orange, Neon Pink, Peach Azalea.

! Post-it® Note Information



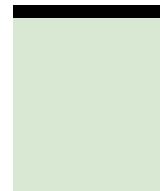
3" x 3"

Actual size
3" x 2¹⁵/₁₆"
Imprint Area
2¹/₂" x 2¹/₁₆"



4" x 3"

Actual size
4" x 2¹⁵/₁₆"
Imprint Area
3¹/₂" x 2¹/₁₆"



4" x 6"

Actual size
4" x 5¹/₈"
Imprint Area
3¹/₂" x 5³/₈"

**Additional sizes available!
Call for pricing.**

Post-it® Cubes

Item Number	Description	250	Price Per Cube		
			500	1,000	2,500
31590008	2¾" x 2¾" x 1½"				
	1 color sides*	3.95	3.73	3.51	2.86
	2 color/1 design sides	4.66	4.25	3.89	3.18
	2 color/2 design sides	6.26	4.25	3.89	3.18
	1 color sheet - ADD	1.27	0.89	0.72	0.54
31590009	2¾" x 2¾" x 2¾"				
	1 color sides*	6.60	6.20	5.66	5.25
	2 color/1 design sides	7.32	6.55	6.05	5.52
	2 color/2 design sides	8.87	6.55	6.05	5.52
	1 color sheet - ADD	1.82	1.39	1.12	0.89
31590010	4" x 4" x 2"				
	1 color sides*	8.35	7.81	6.90	6.42
	2 color/1 design sides	8.88	8.15	7.15	6.68
	2 color/2 design sides	10.34	8.15	7.15	6.68
	1 color sheet - ADD	1.44	1.05	0.72	0.62

(R)

*For 250 quantity: Price includes the same 1-color design on all 4 sides. For 500+ quantity: Price includes up to 4 different 1-color designs and each design can be a different color.

PMS: No charge except for metallic, fluorescent or special color mix.

Fax/E-mail Proof: \$15.00(V) Add 5 working days.

Production: 9 working days after all approvals for side printing. Add 5 days for sheet imprint.

Paper Colors: Carnation, Cream, Gray, Sky Blue, Spring Green, Canary Yellow®, White. Less than 500-white only.



Memo Cubes

Item Number	Description	120	Price Per Cube		
			240	540	1,020
31580000	2½" x 2½" x 2½"				
	Side Imprint - ADD	5.07	4.79	4.55	4.39
	Sheet Imprint - ADD	1.34	1.34	1.34	1.34
31580000	3" x 3" x 3"	90	270	540	1,080
	Side Imprint - ADD	5.70	5.35	5.07	4.48
	Sheet Imprint - ADD	2.10	2.10	2.10	2.10
31580000	3" x 3" x 1½"	90	270	540	1,080
	Side Imprint - ADD	3.14	2.94	2.84	2.74
	Sheet Imprint - ADD	1.60	1.60	1.60	1.60

(R)

Set-up: \$75.00(V) Includes a different 4CP imprint on each side. Digital artwork only.

Fax/E-mail Proof: \$15.00(V) Add 5 working days.

Production: 10 working days after all approvals. Add 5 working days for sheet imprint.

Size: 2½" x 2½" x 2½" Side Imprint Area: 2½" x 2½" Sheet Imprint Area: 2" x 2"

Size: 3" x 3" x 3" Side Imprint Area: 2¾" x 2¾" Sheet Imprint Area: 2½" x 2½"

Size: 3" x 3" x 1½" Side Imprint Area: 2¾" x 1¼" Sheet Imprint Area: 2½" x 2½"

Note: PMS colors are matched to the closest process color. PMS matches are not available.

Cubes with sheet imprinting must be ordered in increments of the first column quantity.



Memo Pads

Item Number	Description	Price Per Pad		
		500	1,000	2,500
31590012	4" x 6" 25 Sheets	0.67	0.62	0.57
	4" x 6" 50 Sheets	1.12	1.05	0.95
	6" x 9" 25 Sheets	1.22	1.14	1.05
	6" x 9" 50 Sheets	2.20	2.07	1.92

(R)

Price includes a 4-color process imprint on white paper with chipboard backing.

Proof: Black & White - \$15.00(V). Color - \$20.00(V) Add 5 working days

Production: 7 working days after all approvals.

Note: All PMS colors will be converted to the closest 4CP match. Exact PMS matches are not available. Bleeds are available on pads.



Perfect for remembering important phone numbers!



A Rotary File Cards
Size: 2⁹/₁₆" x 3³/₈"
Imprint Area: 3³/₄" x 1¹/₂"
Tab Imprint Area: 1⁵/₈" x ⁵/₁₆"
Stock: 24 mil Plastic
Specify left, right or center tab.



D Slotted ID Badge
Size: 2¹/₈" x 3³/₈"
Imprint Area: 1⁷/₈" x 3¹/₈"
Stock: 30 mil plastic
Specify horizontal or vertical badge direction.
Attachment is available for an additional charge.



B C Membership Cards
Size: 2¹/₈" x 3³/₈"
Imprint Area: 3¹/₈" x 1⁷/₈"
Stock: 30 mil or 12 mil Plastic
Fill bleeds available on card front only.



Call for Process Color pricing.

Rotary File Cards/Membership Cards/ID Badge

Item Number	Price Per Piece					
	250	500	1,000	2,500	5,000	10,000
A 31510000	0.62	0.42	0.32	0.24	0.20	0.17
B 31511000 (30 mil)	0.69	0.55	0.40	0.27	0.25	0.22
C 31512000 (12 mil)	--	--	0.27	0.20	0.17	0.15
D 31513007	0.72	0.55	0.40	0.34	0.30	0.27
Ea. Add'l Color/Side/Signature Panel	0.25	0.20	0.14	0.10	0.07	0.05

Set-up/Repeat Set-up: \$40.00(V) per color per side.

PMS: \$37.50(V).

Fax/E-mail Proof: \$17.50(V) Add 5 working days.

Copy Change (250 min. per change): \$50.00(V).

Production: 12 working days after all approvals.

Typeset is available for an additional charge.

Card Colors: Red, Orange, Yellow, Green, White, Gray, Tan, Light Blue, Medium Blue, Dark Blue. Metallic Gold or Silver is available for an additional \$0.05(R) each.

Imprint colors: 185 Red, 186 Red, 485 Red, 202 Burgundy, 189 Pink, 211 Pink, Pantone Orange, 123 Yellow Gold, Pantone Yellow, 348 Green, 350 Green, 321 Teal, Process Blue, Reflex Blue, 300 Blue, 286 Blue, 281 Navy, Pantone Purple, Pantone Violet, 469 Brown, 478 Brown, 423 Gray, Black, White, 877 Silver, 873 Gold.

Die-Cut Magnets

	250	500	1,000	2,500	5,000
Group 1 20 mil	0.62	0.40	0.24	0.19	0.17
Group 1 35 mil	0.75	0.47	0.29	0.24	0.20
Group 2 20 mil	0.82	0.52	0.42	0.37	0.32
Group 2 35 mil	0.89	0.62	0.49	0.42	0.37
Each Add'l Color	0.29	0.19	0.10	0.07	0.05

Price includes a one color imprint. (R)

Group 1

Shape	Size	20 mil Item Number	35 mil Item Number
Heart	2" x 2"	31520003	31520103
Bandage	1" x 3 ⁹ / ₁₆ "	31520004	31520104
Tooth	1 ³ / ₄ " x 2 ¹ / ₂ "	31520005	31520105
Square	2" x 2"	31520010	31520110
Circle	2" Diameter	31520013	31520113
Circle	2 ⁷ / ₈ " Diameter	31520007	31520107
Phone	2 ³ / ₁₆ " x 2 ¹ / ₂ "	31520008	31520108
Mortar	1 ⁵ / ₈ " x 1 ³ / ₄ "	31520014	31520114
Mortar	2" x 2 ⁵ / ₈ "	31520009	31520109
Van	1 ¹ / ₄ " x 2 ⁷ / ₈ "	31520011	31520111
Del. Truck	1 ¹ / ₁₆ " x 3"	31520012	31520112

Group 2

Shape	Size	20 mil Item Number	35 mil Item Number
House	2 ⁷ / ₁₆ " x 3 ¹ / ₁₆ "	31520001	31520101
Square	3" x 3"	31520016	31520116
Stop Sign	2 ¹ / ₂ " x 2 ¹ / ₂ "	31520002	31520102
Van	1 ⁵ / ₈ " x 4"	31520006	31520106
Circle	3" Diameter	31520015	31520115

PMS: \$40.00(V).

Screens: \$35.00(V) per screen.

Copy Change: \$30.00(V) per change. Must be in increments of 250.

Fax/E-mail Proof: \$10.00(V) Add 5 working days.

Production: 10 working days after all approvals.

Imprint Colors: 185 Red, 186 Red, 200 Red, Warm Red, 211 Pink, 2655 Purple, Pantone Purple, Pantone Violet, 208 Burgundy, 320 Aqua, 2747 Blue, 293 Blue, 2985 Blue, Process Blue, Reflex, 116 Yellow, 102 Yellow, 143 Yellow, 474 Beige, 465 Tan, 172 Orange, 477 Brown, 430 Gray, Cool Gray 1, 347 Green, 349 Green, 368 Green, 368 Green, Black, White, 877 Silver, 873 Gold, 806 Pink, 811 Orange, 809 Yellow, 802 Green.

Note: Stock graphics are not automatically printed and, if requested, count as one of your imprint colors.

Beige background on the bandage magnet is automatically included.



4" x 6" Magnet

	500	1,000	2,500	5,000
31580000 (20 mil)	1.07	0.89	0.75	0.62
31580000 (30 mil)	1.20	1.04	0.87	0.72
Each Add'l Color	0.29	0.19	0.10	0.07

Price includes a one color imprint. (R)

Size: 4" x 6" square corners, 20 or 30 mil.

PMS: \$40.00(V).

Screens: \$35.00(V) per screen.

Copy Change: \$30.00(V) per change. Must be in increments of 250.

Fax/E-mail Proof: \$10.00(V) Add 5 working days.

Production: 9 working days.

Imprint Colors: Black, White, 185 Red, 186 Red, 200 Red, Warm Red, 211 Pink, 2655 Purple, Pantone Purple, Pantone Violet, 208 Burgundy, 320 Aqua, 2747 Blue, 293 Blue, 2986 Blue, Process Blue, Reflex Blue, 116 Yellow, 102 Yellow, 143 Yellow, 474 Beige, 465 Tan, 172 Orange, 477 Brown, 430 Gray, Cool Gray1, 347 Green, 349 Green, 364 Green, 368 Green, 877 Silver, 873 Gold, 806 Pink, 811 Orange, 809 Yellow, 802 Green.



Prospectors
 Property Management, Inc.
 (408) 779-0111
 www.ppmrental.com
 Emergency Service and Repair
 After Normal Business Hours
 (408) 995-1511

Business Card Magnets



Stock Business Card Magnets

Item Number	125	250	500	1,000	2,500	5,000	10,000
31521001 (20 mil)	1.25	0.64	0.32	0.27	0.24	0.20	0.17

Price includes a one color imprint. (R)

Electronic art required. Otherwise, an art charge of \$70.00(V) will apply.

PMS: Not available.

Copy Change: \$30.00(V) per change. Must be in increments of 250.

Fax/E-mail Proof: \$10.00(V) Add 5 working days.

Production: 7 working days after all approvals.

Imprint Colors: Black, 200 Red, 211 Pink, Pantone Violet, 208 Burgundy, 320 Aqua, 2747 Blue, 293 Blue, 116 Yellow, 172 Orange, 477 Brown, 430 Gray, 347 Green, 349 Green.

Note: Screens are not available.

Custom Business Card Magnets

Item Number	250	500	1,000	2,500	5,000
31521003 (20 mil)	1.00	0.50	0.40	0.37	0.32
31521004 (30 mil)	1.34	0.67	0.54	0.49	0.42
Each Add'l Color	0.45	0.29	0.19	0.10	0.07

(R)

PMS: \$40.00(V).

Screens: \$35.00(V) per screen.

Copy Change: \$30.00(V) per change. Must be in increments of 250.

Fax/E-mail Proof: \$10.00(V) Add 5 working days.

Production: 9 working days after all approvals.

Imprint Colors: See list on die-cut magnet page.

Four-Color Process Business Card Magnets

Item Number	250	500	1,000	2,500	5,000
31580010 (20 mil)	0.97	0.52	0.42	0.37	0.32
31580011 (30 mil)	1.25	0.64	0.54	0.49	0.44

(R)

Electronic art required, otherwise \$70.00(V) art charge will apply.

Copy Change: \$30.00(V). Must be in increments of 250.

Press Proof: \$35.00(V) Add 5 working days.

Production: 9 working days.

Imprint Colors: All PMS colors are converted to the closest 4CP match. PMS matches, metallic colors and fluorescent colors are not available.



Bumper Stickers

Item Number	Size	Imprint Colors	Price Per Piece						
			125	250	500	1,000	1,500	2,500	5,000
31530501	3¾" x 7½"	1	1.42	0.85	0.57	0.37	0.30	0.24	0.19
		2	2.15	1.30	0.79	0.47	0.40	0.30	0.22
		Ea. Add'l Color	0.87	0.49	0.27	0.15	0.12	0.09	0.07
31530502	3" x 11½"	1	1.47	0.87	0.59	0.37	0.32	0.24	0.19
		2	2.20	1.29	0.79	0.50	0.42	0.32	0.24
		Ea. Add'l Color	0.92	0.49	0.27	0.15	0.12	0.09	0.07
31530503	3¾" x 11½"	1	1.49	0.92	0.62	0.40	0.35	0.27	0.22
		2	2.30	1.37	0.87	0.54	0.44	0.34	0.29
		Ea. Add'l Color	1.00	0.55	0.34	0.19	0.14	0.09	0.07
31530504	2¾" x 15"	1	1.49	0.92	0.62	0.40	0.35	0.27	0.22
		2	2.30	1.37	0.87	0.54	0.44	0.34	0.29
		Ea. Add'l Color	1.00	0.55	0.34	0.19	0.14	0.09	0.07
31530505	3¾" x 15"	1	1.57	0.97	0.65	0.45	0.39	0.32	0.27
		2	2.42	1.39	0.92	0.62	0.49	0.40	0.34
		Ea. Add'l Color	1.05	0.57	0.32	0.19	0.14	0.09	0.07
31530519	2½" x 9¼"	1	1.37	0.82	0.54	0.32	0.27	0.20	0.15
		2	2.12	1.22	0.75	0.44	0.37	0.27	0.20
		Ea. Add'l Color	0.89	0.49	0.27	0.15	0.12	0.09	0.07

(R)

Stock: White or Yellow Vinyl.

Non-Digital Artwork: Add \$45.00(V) art charge.

PMS: \$33.00(V).

Copy Change: \$33.00(V) per change in multiples of 125.

Screens/Halftones: \$33.00(V) per screen tint.

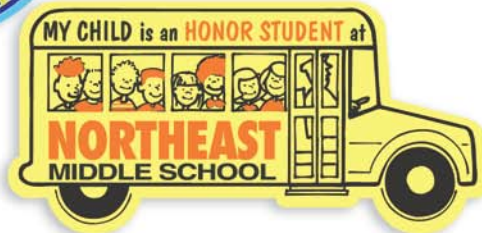
Fax/E-mail Proof: No charge, add 5 working days.

Production: 7 working days after all approvals.

Imprint Colors: 102 Primrose Yellow, 123 Medium Yellow, 1235 Goldenrod, 7426 Scarlet Red, 1585 Pumpkin Orange, 186 Fire Red, 172 Brilliant Orange, 2935 Peacock Blue, 2748 Ultra Blue, 655 Navy, 214 Rhodamine Red, 1895 Pink, 269 Purple, 877 Metallic Silver, 3415 Emerald Green, 7457 Sky Blue, 2915 Light Blue, 476 Brown, 4685 Beige, 7482 Brilliant Green, 3305 Dark Green, 321 Pacific Teal, 420 Gray, 423 Medium Gray, 405 Charcoal Gray, 871 Metallic Gold, 806 Fluorescent Pink, 805 Fluorescent Red, 803 Fluorescent Yellow, 804 Fluorescent Orange, 802 Fluorescent Green.

Note: PMS colors listed are approximations.

Custom Decals come in a variety of different sizes, shapes and colors!



Call us for pricing on Oil Change Decals.



Call for pricing on Numbered Decals.

Vinyl Decals

Size	Imprint Colors	Price Per Piece									
		25	50	125	250	500	1,000	1,500	2,500	5,000	10,000
5 or less Sq. In.	1 Color	--	--	1.85	0.97	0.54	0.30	0.24	0.17	0.12	0.09
	Ea. Add'l Color	--	--	0.67	0.38	0.20	0.13	0.09	0.07	0.04	0.04
6-10 Sq. In.	1 Color	--	4.62	1.89	1.02	0.57	0.32	0.24	0.19	0.14	0.12
	Ea. Add'l Color	--	1.73	0.78	0.42	0.24	0.14	0.10	0.07	0.05	0.04
11-17 Sq. In.	1 Color	9.17	4.72	2.05	1.15	0.64	0.39	0.29	0.24	0.19	0.15
	Ea. Add'l Color	4.04	2.09	0.92	0.48	0.25	0.15	0.12	0.10	0.05	0.04
18-28 Sq. In.	1 Color	10.00	5.24	2.37	1.32	0.77	0.49	0.39	0.32	0.27	0.20
	Ea. Add'l Color	4.50	2.38	1.01	0.55	0.29	0.17	0.12	0.10	0.08	0.04
29-41 Sq. In.	1 Color	10.40	5.49	2.49	1.37	0.80	0.52	0.44	0.35	0.29	0.24
	Ea. Add'l Color	4.56	2.45	1.02	0.57	0.32	0.17	0.14	0.11	0.07	0.05
42-56 Sq. In.	1 Color	10.70	5.82	2.70	1.54	0.92	0.62	0.50	0.42	0.37	--
	Ea. Add'l Color	4.99	2.59	1.11	0.64	0.35	0.20	0.16	0.13	0.08	--
57-73 Sq. In.	1 Color	11.00	6.19	2.77	1.59	0.99	0.69	0.59	0.52	0.44	--
	Ea. Add'l Color	5.11	2.66	1.21	0.65	0.36	0.23	0.17	0.14	0.09	--
74-93 Sq. In.	1 Color	11.30	6.37	2.87	1.70	1.10	0.82	0.69	0.62	0.54	--
	Ea. Add'l Color	5.31	2.80	1.27	0.68	0.38	0.22	0.20	0.14	0.13	--
94-116 Sq. In.	1 Color	10.60	6.59	3.15	1.89	1.20	0.94	0.79	0.70	0.64	--
	Ea. Add'l Color	5.57	2.91	1.35	0.74	0.43	0.26	0.22	0.19	0.13	--
117-143 Sq. In.	1 Color	12.10	6.92	3.32	2.04	1.40	1.07	0.92	0.82	0.75	--
	Ea. Add'l Color	5.72	3.13	1.41	0.76	0.47	0.30	0.24	0.19	0.14	--
144-175 Sq. In.	1 Color	14.80	7.90	3.75	2.34	1.60	1.24	1.12	1.04	--	--
	Ea. Add'l Color	6.75	3.68	1.70	0.93	0.50	0.32	0.28	0.22	--	--

Custom vinyl decals are 4 mil thick and supplied with permanent pressure-sensitive acrylic adhesive.

Stock: #31531100 White Vinyl (adhesive on back), #31531200 Yellow Vinyl (adhesive on back), #31533000 Transparent Face Adhesive, #31533100 Transparent Back Adhesive.

PMS Ink Match: \$33.00(V).

Die Charge: No charge for square corners when each dimension exceeds 1" or for circles every 1/2" in diameter.

All others (up to 175 sq. in.) add \$180.00(V).

Screens/Halftones: \$33.00(V) per screen tint.

Fax/E-mail Proof: No charge, add 5 working days.

Copy Change: \$33.00(V) per change in increments of minimum quantities shown for that size.

Production: 10 working days after all approvals.

Imprint Colors: 102 Primrose Yellow, 123 Medium Yellow, 1235 Goldenrod, 7426 Scarlet Red, 1585 Pumpkin Orange, 186 Fire Red, 172 Brilliant Orange, 2935 Peacock Blue, 2748 Ultra Blue, 655 Navy, 214 Rhodamine Red, 1895 Pink, 269 Purple, 877 Metallic Silver, 3415 Emerald Green, 7457 Sky Blue, 2915 Light Blue, 476 Brown, 4685 Beige, 7482 Brilliant Green, 3305 Dark Green, 321 Pacific Teal, 420 Gray, 423 Medium Gray, 405 Charcoal Gray, 871 Metallic Gold, 806 Fluorescent Pink, 805 Fluorescent Red, 803 Fluorescent Yellow, 804 Fluorescent Orange, 802 Fluorescent Green.

Note: It is recommended that all inks on transparent decals be backed with white. White is priced as an additional color.

Display your message on Custom Static Cling Decals!



Custom Static Stick® Decals

Size	Imprint Colors	Price Per Piece									
		25	50	125	250	500	1,000	1,500	2,500	5,000	10,000
5 or less Sq. In.	1 Color	--	--	1.82	1.04	0.59	0.32	0.24	0.19	0.12	0.10
	Ea. Add'l Color	--	--	0.73	0.41	0.23	0.15	0.10	0.08	0.05	0.04
6-10 Sq. In.	1 Color	--	--	1.99	1.10	0.62	0.37	0.27	0.22	0.17	0.14
	Ea. Add'l Color	--	--	0.86	0.47	0.28	0.18	0.12	0.09	0.05	0.04
11-17 Sq. In.	1 Color	--	4.74	2.20	1.22	0.69	0.44	0.34	0.27	0.22	0.19
	Ea. Add'l Color	--	2.28	1.05	0.59	0.33	0.18	0.14	0.10	0.05	0.04
18-28 Sq. In.	1 Color	--	5.37	2.54	1.49	0.87	0.59	0.47	0.40	0.34	0.25
	Ea. Add'l. Color	--	2.72	1.23	0.66	0.38	0.21	0.16	0.12	0.07	0.05
29-41 Sq. In.	1 Color	10.34	5.84	2.62	1.49	0.90	0.64	0.55	0.45	0.39	0.34
	Ea. Add'l Color	4.60	2.82	1.30	0.69	0.38	0.23	0.17	0.14	0.07	0.05
42-56 Sq. In.	1 Color	10.67	6.07	2.84	1.70	1.09	0.79	0.67	0.59	0.52	--
	Ea. Add'l Color	5.03	3.14	1.44	0.81	0.45	0.26	0.19	0.15	0.09	--
57-73 Sq. In.	1 Color	11.92	6.55	3.00	1.79	1.17	0.84	0.74	0.67	0.59	--
	Ea. Add'l Color	5.35	3.26	1.49	0.83	0.48	0.28	0.19	0.16	0.10	--
74-93 Sq. In.	1 Color	12.62	7.04	3.20	1.89	1.27	0.90	0.80	0.74	0.65	--
	Ea. Add'l Color	5.63	3.38	1.54	0.88	0.50	0.28	0.20	0.18	0.12	--
94-116 Sq. In.	1 Color	13.34	7.85	3.59	2.15	1.47	1.09	0.95	0.82	0.72	--
	Ea. Add'l Color	6.35	3.52	1.67	0.97	0.52	0.30	0.23	0.18	0.14	--
117-143 Sq. In.	1 Color	13.82	8.22	3.82	2.34	1.62	1.24	1.12	1.04	--	--
	Ea. Add'l. Color	6.82	3.70	1.72	1.03	0.56	0.32	0.24	0.20	--	--
144-175 Sq. In.	1 Color	17.14	9.54	5.04	3.09	2.15	1.62	1.37	1.24	--	--
	Ea. Add'l Color	7.40	4.01	1.85	1.07	0.60	0.37	0.32	0.30	--	--

Stock: #31532000 White w/back Static, #31532683 Clear Face Static, #31532685 Clear Back Static.

Screens/Halftones: \$33.00(V) per screen tint.

PMS Match: \$33.00(V).

Copy Change Charge: \$33.00(V) per change in increments of minimum quantities shown.

Production Time: 11 working days after all approvals.

Die Charge: No charge for square corners when each dimension exceeds 1" or for circles every 1/2" diameter. All others (up to 175 sq. in.) add \$180.00(V).

Fax/E-mail Proof: No charge, add 5 working days.

Imprint Colors: 102 Primrose Yellow, 123 Medium Yellow, 1235 Goldenrod, 7426 Scarlet Red, 1585 Pumpkin Orange, 186 Fire Red, 172 Brilliant Orange, 2935 Peacock Blue, 2748 Ultra Blue, 655 Navy, 214 Rhodamine Red, 1895 Pink, 269 Purple, 877 Metallic Silver, 3415 Emerald Green, 7457 Sky Blue, 2915 Light Blue, 476 Brown, 4685 Beige, 7482 Brilliant Green, 3305 Dark Green, 321 Pacific Teal, 420 Gray, 423 Medium Gray, 405 Charcoal Gray, 871 Metallic Gold, 806 Fluorescent Pink, 805 Fluorescent Red, 803 Fluorescent Yellow, 804 Fluorescent Orange, 802 Fluorescent Green.

Note: It is recommended that all inks on clear static decals be backed with white. White is priced as an additional color.

Custom Chrome Polyester Decals also available! Call us pricing.





Neon Colors



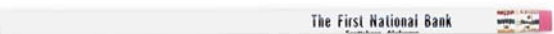
Solid Colors



Abert Hexagon



Abert Round



International

Bic® Solid & Neon Wood Case Pencils

Item Number	500+
31550100 (Solid)	0.25
31550101 (Neon)	0.30
Each Add'l Color	0.17 (R)

PMS: \$35.00(V).

Fax/E-mail Proof: \$10.00(V) Add 5 working days.

Production: 7 working days after all approvals.

Bic Solid includes a gold ferrule and white eraser. Bic Neon includes a black ferrule and the eraser matches barrel color.

Barrel Imprint Area: 4" x 3/4", 2 color maximum.

Barrel Colors: Solid – Red, Orange, Silver, Green, Purple, Black, Navy, Yellow, Blue, White.

Barrel Colors: Neon – Orange, Green, Yellow, Purple, Pink.

Imprint Colors: White, Yellow, Navy, Purple, Green, Brown, Black, Orange, Reflex, Burgundy, Teal, Charcoal, Red, Pink, Process Blue, Maroon, Forest Green, Cream, Orange, Green.

Metallic Imprint Colors: Blue, Gold, Copper, Green, Magenta, Silver.

Note: All pencils are unsharpened. Sharpening is available for an additional charge.

*Express your message
in full color!*

Abert Special & International Pencils

Item Number	500+
31550000 (Abert Round)	0.44
31550001 (Hexagon)	0.44
2 color (1000 min) (Abert Round)	0.46
3158000 (International)	0.29
2 color (1000 min) (International)	0.31 (R)

Set-up: \$25.00(V) per color – Round. No set-up on hexagon.

PMS: \$20.00(V).

Fax/E-mail Proof: \$15.00(V).

Production: 12 working days after all approvals.

Imprint Area: 13/16" x 4 1/2" (Round), maximum 3 consecutive lines of 45 characters – each line may be a different color (hexagon).

Abert Round Colors: Yellow, White, Dark Green, Blue, Dark Blue, Cream, Green, Aqua, Powder Blue, Royal Blue, Red, Pink, Pastel Pink, Orange, Silver, Gold, High-Gloss Yellow, High-Gloss Green, High-Gloss Blue, High-Gloss Pink, Maroon, Purple, Violet, Plum, Natural, Burgundy, Black, Assorted Light, Assorted Dark.

Abert Hexagon Colors: Yellow, Green, Dark Green, Blue, Dark Blue, Red, Cream, Orange, Gold, White, Maroon, Purple, Natural, Burgundy, Black, Assorted Light, Assorted Dark

International Colors: Yellow, Green, Blue, Dark Green, Dark Blue, Royal Blue, Red, Gray, Cream, Orange, Silver, Gold, White, High-Gloss Green, Maroon, Purple, Plum, Burgundy, Lavender, Black, Teal, Assorted Light, Assorted Dark.

Imprint Colors: Reflex, 116 Yellow, 165 Orange, 3302 Green, 348 Green, 320 Teal, 527 Purple, 231 Pink, 201 Maroon, 430 Gray, 476 Brown, Rhodamine Red, Fire Red, Violet, 873 Gold, 877 Silver, Black, White.

Note: All pencils are unsharpened. Sharpening is available for an additional charge.

Bic® Pivo Twist Action Pen

Item Number	300+
31552000	0.85
Each Add'l Color	0.17
Clip Imprint	0.22

(R)

PMS: \$35.00(V).

Fax/E-mail Proof: \$10.00(V) Add 5 working days.

Production: 7 working days after all approvals.

Barrel Imprint Area: 2" x 3/4"

Clip Imprint Area: 1" x 5/32"

Pen/Ring Colors: Navy, Teal, Burgundy, Yellow, Red, White, Black, Forest Green, Purple, Blue.

Point/Ink Colors: Medium Point Black or Blue, Fine Point Black or Blue.

Imprint Colors: White, Yellow, Navy, Purple, Green, Brown, Black, Orange, Reflex, Burgundy, Teal, Charcoal, Red, Pink, Process Blue, Maroon, Forest Green, Cream.

Metallic Imprint Colors: Blue, Gold, Copper, Green, Magenta, Silver.

Note: Maximum 2 colors on barrel and 1 color on clip.

Clip Imprint Area: 1" x 5/32"



Barrel Imprint Area: 2" x 3/4"



Bic® Grip Roller Pen

Item Number	300+
31554000	1.13
Each Add'l Color/Loc	0.17

(R)

PMS: \$35.00(V).

Fax/E-mail Proof: \$10.00(V) Add 5 working days.

Production: 7 working days after all approvals.

Cap Imprint Area: 1 1/2" x 5/8"

Optional Barrel Imprint Area: 1 1/2" x 5/8"

Barrel Colors: White, Navy, Light Gray, Forest Green, Charcoal, Burgundy, Black.

Point/Ink Colors: Fine Point Black or Blue.

Imprint Colors: White, Yellow, Navy, Purple, Green, Brown, Black, Orange, Reflex, Burgundy, Teal, Charcoal, Red, Pink, Process Blue, Maroon, Forest Green, Cream.

Metallic Imprint Colors: Blue, Gold, Copper, Green, Magenta, Silver.

Note: Maximum 4 colors on barrel/cap combination. Unless otherwise specified, imprint is put on cap.

Optional Barrel Imprint Area: 1 1/2" x 5/8"



Cap Imprint Area: 1 1/2" x 5/8"

Bic® Clic Stic Pen

Item Number	300+
31557000	0.68
Each Add'l Color	0.17
Clip Imprint	0.22

(R)

PMS: \$35.00(V).

Fax/E-mail Proof: \$10.00(V) Add 5 working days.

Production: 7 working days after all approvals.

Barrel Imprint Area: 2 1/8" x 3/4"

Clip Imprint Area: 1 1/8" x 5/32"

Barrel/Trim: Teal, Purple, Yellow, Forest Green, Burgundy, Navy, Blue, Red, Black, White, Clear, Cream, Green, Orange, Silver (barrel only).

Point/Ink Colors: Medium Point Black, Blue or Red. Fine Point Black or Blue.

Imprint Colors: White, Yellow, Navy, Purple, Green, Brown, Black, Orange, Reflex, Burgundy, Teal, Charcoal, Red, Pink, Process Blue, Maroon, Forest Green, Cream.

Metallic Imprint Colors: Blue, Gold, Copper, Green, Magenta, Silver.

Note: Maximum 3 colors on barrel and 1 color on clip.

Clip Imprint Area: 1 1/8" x 5/32"



Barrel Imprint Area: 2 1/8" x 3/4"





Barrel Imprint Area: 2 1/2" x 3/4"

Barrel Imprint Area: 3" x 1/4" three sides.



Printing Layout: As positioned in photo, Side 1 is the side with the "Batavia High School" imprint. Side 3 is the side shown with "45th Class Reunion". Side 2 is not shown.



Clip Imprint Area: 1 1/8" x 5/32"



Bic® Round Stic Pen

Item Number	500+
31558000	0.49
Each Add'l Color	0.17

(R)

PMS: \$35.00(V).

Fax/E-mail Proof: \$10.00(V) Add 5 working days.

Production: 7 working days after all approvals.

Barrel Imprint Area: 2 1/2" x 3/4"

Barrel/Trim Colors: Teal, Purple, Yellow, Forest Green, Burgundy, Pink, Navy, Blue, Red, Black, White, Clear, Silver (Barrel Only), Cream, Orange, Green.

Point/Ink Colors: Medium Point Black, Blue, Purple or Red. Fine Point Black or Blue.

Imprint Colors: White, Yellow, Navy, Purple, Green, Brown, Black, Orange, Reflex, Burgundy, Teal, Charcoal, Red, Pink, Process Blue, Maroon, Forest Green, Cream.

Metallic Imprint Colors: Blue, Gold, Copper, Green, Magenta, Silver.
Note: Maximum 2 colors on barrel.

Bic® Tri-Stic & Tri-Stic Clear Pen

Item Number	300+
31555000 Tri-Stic	0.84
31555001 Tri-Stic Clear	0.94
Clip Imprint	0.22

(R)

PMS: \$35.00(V).

Fax/E-mail Proof: \$10.00(V) Add 5 working days.

Production: 7 working days after all approvals.

Barrel Imprint Area: 3 x 1/4" three sides.

Clip Imprint Area: 1 1/8" x 5/32"

Barrel/Trim Colors: Teal, Purple, Yellow, Forest Green, Navy, Blue, Red, Black, White, Cream, Green, Orange, Burgundy.

Point/Ink Colors: Medium Point Black, Blue or Red. Fine Point Black or Blue.

Tri-Stic Clear Barrel Colors: Pink Clear, Blue Clear, Orange Clear, Green Clear, Purple Clear, Clear, Black Clear, Red Clear, Royal Blue Clear.

Trim Color: Clear Frosted.

Point/Ink Colors: Medium Point Black or Blue.

Imprint Colors: White, Yellow, Navy, Purple, Green, Brown, Black, Orange, Reflex, Burgundy, Teal, Charcoal, Red, Pink, Process Blue, Maroon, Forest Green, Cream.

Metallic Imprint Colors: Blue, Gold, Copper, Green, Magenta, Silver.

Note: Maximum 1 color on 3 sides. Copy and color may be different on each side. Specify side that each line of copy should be placed on.

Pens printed with your company name and logo are an effective and inexpensive way to advertise your business. Additional pens available - call for information and prices.

First Aid/Pill Boxes

Item Number	Description	250	500	1,000
31580000	Primary Care First Aid Kit	2.07	1.99	1.85
31580000	Oval Pill Box	0.67	0.64	0.60
31580000	Heart Pill Box	0.67	0.64	0.60
31580000	Primary Care Bandage Dispenser	0.81	0.77	0.72
31580000	Ea. Add'l Color/Position	0.19	0.19	0.19

Set-Up: \$50.00(V) per color/position.

PMS: \$50.00(V).

Production: 7 working days after all approvals.

Standard Imprint Colors: White (recommended on Tropi-Cool colors), Cool Gray 10, 123 Yellow, 166 Orange, 186 Red, 202 Burgundy, 259 Purple, 286 Blue, Reflex Blue, 289 Dark Blue, Process Blue, 343 Dark Green, 348 Green, 476 Brown, 189 Pink, Metallic Gold, Metallic Silver.

Item Colors

TROPI-COOL™ TRANSLUCENT COLORS



SOLID COLORS



(color representations are approximate)



First Aid Kit

Size: 2⁹/₁₆" H x 4¹/₈" W x 1¹/₂" D
Imprint Area: 1³/₄" H x 3¹/₂" W



Oval Pill Box

Size: 1¹/₁₆" H x 1⁷/₈" W x 7⁸/₁₆" D
Imprint Area: 7⁷/₈" H x 1¹/₄" W



Heart Pill Box

Size: 1⁷/₈" H x 1³/₄" W x 1¹/₁₆" D
Imprint Area: 7⁷/₈" H x 1¹/₄" W



Bandage Dispenser

Size: 1⁵/₈" H x 4³/₁₆" W x 3⁸/₁₆" D
Imprint Area: 1¹/₈" H x 2⁵/₈" W



Magnetic Memo Boards

Item Number	100	300	500+
31582001 Mini Size	--	1.32	0.97
31582000 Full Size	2.14	1.42	1.35

(R)

Price includes a 4-color process imprint on one or two sides. Order in increments of 100.

Production: 12 working days after all approvals.

White, 14 pt. laminated paper with write on/wipe off pen.

Full Size: 8 1/2" x 11"

Imprint Area: 8 x 9" Allow 1 1/2" at top for pen loop.

Mini Size: 5 1/4" x 8 1/2"

Imprint Area: 5" x 8 1/4" without bleed edge; 5 1/2" x 9" with bleed edge.

Note: All colors will be converted to 4-color process. Exact PMS matches are not available.



A Business Card Letter Openers
Size: 3 1/4" x 3 3/4"
Imprint Area: 1 5/8" x 2 1/2"



A Business Card Letter Openers

Item Number	Description	250	1,000+
31572530	Blank	1.93	1.83
31572505	Blank w/ Magnetic Back	2.15	1.97
31572532	1 Color on Backside	2.07	1.92
	Additional Colors	0.29	0.24

(R)

B Small Letter Openers

Item Number	Description	250	1,000+
31570001	1 or 2 Color on Paper Insert	1.45	1.40
31571042	1 or 2 Color w/Magnetic Back	1.82	1.67
	Additional Colors (over 2)	0.15	0.11

(R)

Set-up: \$31.25(V) per color.

Repeat Set-up: \$15.00(V) per color.

PMS: \$37.50(V).

Fax/E-mail Proof: \$12.00(V) Add 5 working days.

Production: 12 working days after all approvals. Blank - 3 working days.

Item Colors: **A** - Clear, Translucent Red, Translucent Blue, Translucent Green, Translucent Plum, Red, White, Blue, Black, Pink.

B - Red, White, Blue, Black, Translucent Blue, Translucent Green, Translucent Red.

Imprint Colors: 873 Gold, 877 Silver, Black, 429 Gray, 202 Maroon, 485 Red, 267 Purple, 286 Blue, Process Blue, 320 Teal, 347 Green, 3305 Green, 165 Orange, 469 Brown, Pantone Yellow, White, 108 Yellow, 130 Orange, 151 Orange, 200 Red, 210 Pink, 240 Pink, 2665 Purple, 280 Blue, 2925 Blue, 294 Blue, 300 Blue, 321 Turquoise, 340 Green, 343 Green, 361 Green, 425 Charcoal, 430 Gray, 443 Gray, 461 Beige.



B Small Letter Openers
Size: 2" x 2 3/4"
Imprint Area: 1 3/16" x 2 1/16"

Magnetic Snap-its

Item Number	250	500	1,000+
31058616	2.62	2.34	2.06
Ea Add'l Color/Position	0.32	0.32	0.32

(R)

Set-up Charge: \$50.00(V) per color/position.

PMS Match: \$50.00(V).

Production: 7 working days after all approvals.

Two separate, identical pieces snap together with the power of four strong magnets. Mix and match colors at no additional charge.

Price includes a one-color one-position imprint.

Size: 1"H x 2½"W x ¾"D

Imprint Area: ¾"H x 2"W

Item Colors: White, Tropi-Cool Blue, Tropi-Cool Red, Tropi-Cool Purple, Tropi-Cool Green.

Imprint Colors: White (recommended on Tropi-Cool colors), Black, Cool Gray 10, 123 Yellow, 166 Orange, 186 Red, 202 Burgundy, 259 Purple, 286 Royal, 289 Dark Blue, 307 Process Blue, 343 Dark Green, 348 Green, 3278 Teal, 476 Brown, 872 Gold, 877 Silver, 189 Pink.



Screen Sweeps

Item Number	250	500	1,000+
31571000	1.32	1.24	1.17
Each Additional Color	0.32	0.32	0.32

(R)

Set-up: \$50.00(V) per color.

PMS: \$50.00(V).

Production: 7 working days after all approvals.

Price includes a one color imprint on blade and handle.

Size: 3⅞" x 2⅝"

Imprint Area: 1" x 1½" Handle, ¼" x 3⅛" Blade

Item Colors: Red, Blue, Dark Blue, Purple, Yellow, Orange, Pink, Green, Salsa, Antique Blue, Light Gray, Coffee, Dark Green, Black, White.

Translucent Colors: Red, Blue, Green, Purple, Frost, Orange, Smoke, Lime Green, Pink, Yellow, Aqua, Sky Blue, Bright Coral.

Imprint Colors: Black, White, 123 Yellow, 186 Red, 202 Burgundy, 259 Purple, 286 Blue, Reflex, Process Blue, Cool Gray 10, 289 Navy, 348 Green, 343 Green, 166 Orange, 476 Brown, Metallic Gold, Metallic Silver, 3878 Teal, 806 Neon Pink, 189 Pink.

Other Shapes Available: Phone, Light Bulb, Heart, Computer, House, World, Round.

Note: Order up to 4 assorted colors at no charge.



Bic® Four-Color Process Mouse Pads

Item Number	Size	100+
31572000	7½" x 8½" Rectangle	3.79
31572001	8" x 9½" Rectangle	4.17
31572002	8" Round	3.72
31572011	Stock Shapes (see below)	4.17

(R)

Fax/E-mail Proof: \$10.00(V) Add 5 working days.

Product Proof: \$62.50(V) Add 7 working days.

Production: 7 working days after all approvals.

Made of ½" open cell rubber base with white fabric surface. There will be some dot gain on the final image. This can fill in small type.

Artwork that bleeds must extend ⅜" outside cut line.

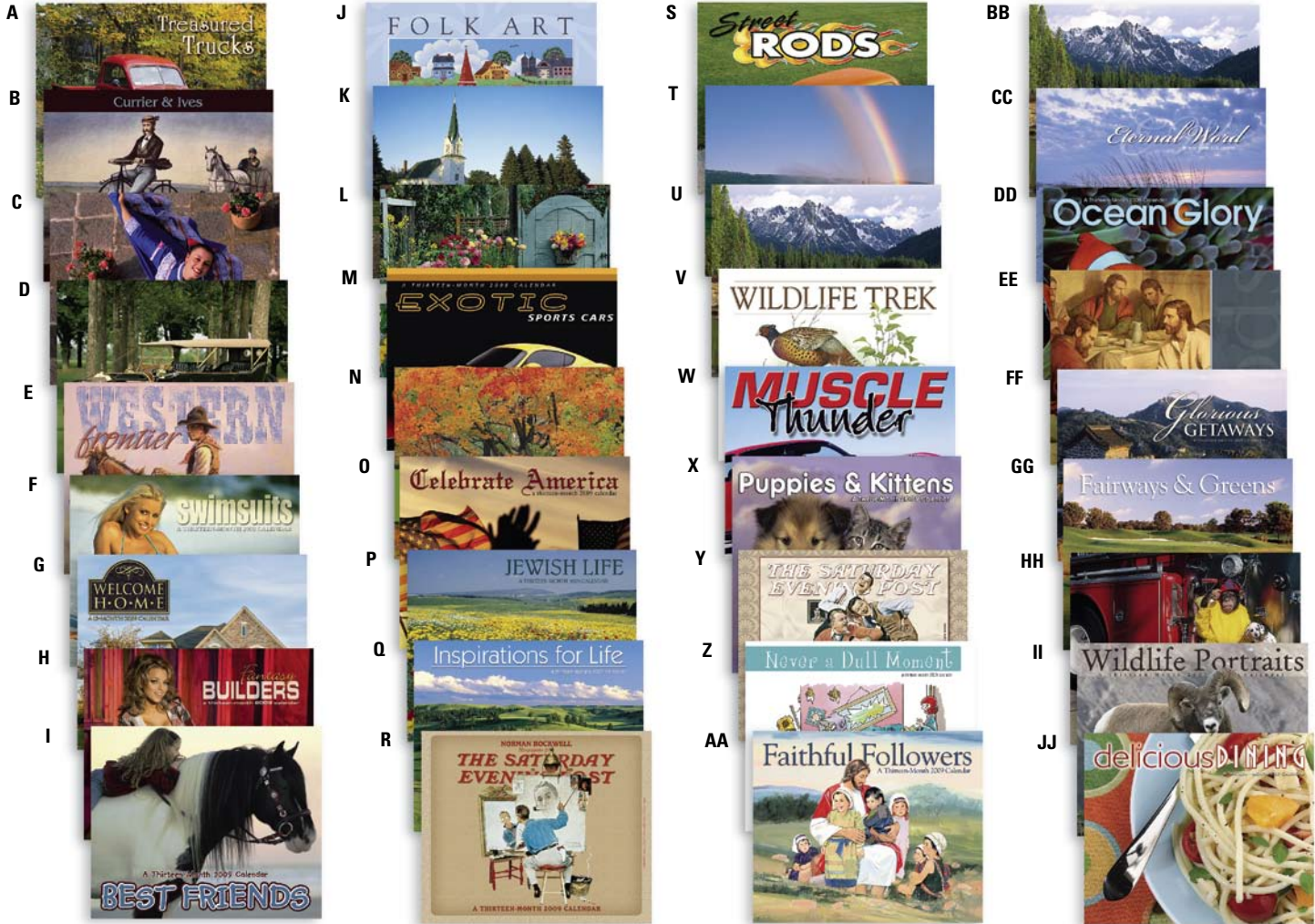
Stock Shapes: Flag, Oval, House, Football, Computer Screen, Heart, Square, Hexagon, Octagon, Mortar & Pestle.

Stock Backgrounds: Sunset, Coins, Space, House, Flag, Football, Stop Sign, Chairs, Beach.

Note: All PMS colors are converted to the closest 4-color process match. Exact matches are not available.



Wall Calendars



13-Month 60# gloss wall calendars with UV coating covers. Price includes a black imprint.
Size: 10" x 10" closed, 10" x 19" open
Imprint Area: 9" W x 1¼" H

Wall Calendars

Item Number	150	300+
31902004 Stapled	2.23	1.60
31902004 Spiral	2.33	1.70

PMS: \$35.00(V).

2 Color Set-up: \$28.00(V) PLUS 0.37(R) each.

Fax/E-mail Proof: \$12.50(V) Add 5 working days. (2 color maximum)

Production: 12 working days after all approvals if ordered before November 1.

Optional Imprint Colors available with additional charge of \$25.00(V): 208 Maroon, 354 Green, 349 Green, 145 Brown, 469 Brown, 109 Yellow, Process Yellow, 165 Orange, Reflex Blue, Process Blue, 032 Red, 185 Red.

Calendar Letters: **A**-Treasured Trucks, **B**-Currier & Ives, **C**-Mexico, **D**-Antique Autos, **E**-Western Frontier, **F**-Swimsuits, **G**-Welcome Home, **H**-Fantasy Builders, **I**-Best Friends, **J**-Folk Art, **K**-Scenic Churches, **L**-Garden Walks, **M**-Exotic Sports Cars, **N**-Healthy Living, **O**-Celebrate America, **P**-Jewish Life, **Q**-Inspirations for Life, **R**-Norman Rockwell, **S**-Street Rods, **T**-Agriculture, **U**-America, **V**-Wildlife Trek, **W**-Muscle Thunder, **X**-Puppies & Kittens, **Y**-The Saturday Evening Post, **Z**-Faithful Followers, **AA**-Never a Dull Moment, **BB**-America (Spanish), **CC**-Eternal Word, **DD**-Ocean Glory, **EE**-God's Gift, **FF**-Glorious Getaway, **GG**-Fairways & Greens, **HH**-Monkey Mischief, **II**-Wildlife Portraits, **JJ**-Delicious Dining

Note: Different calendar styles may be combined in quantities of 150 per style. Binding must be the same on all.

**Do you need Contractor Calendars?
Call for pricing.**

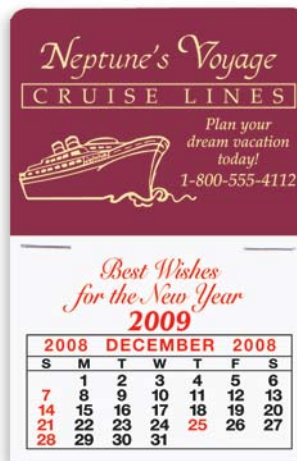


Value Stick Calendars

Item Number	150+
31900003	0.93

(R)

Set-up/Repeat Set-up: \$20.00(V).
Two-color imprint: \$1.21(R) each plus add'l set-up 500 MINIMUM.
Production: 12 working days before November 1. Call for production time during peak season.
Price includes a one-color hot-stamped imprint with a 13-month calendar pad. Calendars are packed in a counter display box.
Vinyl Colors: Gray, Maroon, Beige, Mustard, Black, Blue, Red, Green, White.
Imprint Colors: Gold, Black, White, Pink.
Note: Specify calendar shape.



Calendar Shapes:

602 Traditional 3" x 4 1/2" Imprint: 2 3/4" x 2"	603 #1 3" x 4 3/8" Imprint: 2 3/4" x 1 7/8"	604 House 3" x 3 7/8" Imprint: 2 1/2" x 1"	609 Cow 3" x 4 3/8" Imprint: 1 7/8" x 5/8"	610 Pig 3" x 4" Imprint: 1 5/8" x 5/8"	611 Phone 3" x 4 1/2" Imprint: 2 1/4" x 1 3/8"	612 Cactus 3" x 4 1/2" Imprint: 1 5/8" x 1 1/2"	613 Truck 3" x 4" Imprint: 2" x 1"	614 Semi 3" x 4 1/8" Imprint: 2 1/2" x 7/8"
606 Whale 3" x 4 3/8" Imprint: 2 1/4" x 3/4"	607 Spotlight 3" x 4 1/2" Imprint: 2 5/8" x 1 1/8"	608 Computer 3" x 4 1/2" Imprint: 1 1/2" x 1"	615 Wrecker 3" x 4 1/2" Imprint: 2 1/2" x 7/8"	616 Thank You 3" x 4 1/2" Imprint: 3" x 1"	617 Limo 3" x 4 1/2" Imprint: 3" x 1 1/4"	618 Taxi 3" x 4 3/8" Imprint: 3" x 1"	619 Trades 3" x 4 3/8" Imprint: 1 3/4" x 1"	620 Van 3" x 4 3/8" Imprint: 3" x 3/4"

Valoy Desktop Calendar

Item Number	Size	Imprint Area	150+
31900002	5 1/4" x 5 1/2"	4 5/8" x 1 1/4"	2.18

(R)

Set-up/Repeat Set-up: \$20.00(V).
Production: 12 working days before November 1. Call for production time during peak season.
Phone index printed under calendar pad. Full year calendar on back panel. Envelopes are included. (Calendar not inserted)
Border Colors and Matching Imprint: Green, Blue, Red, Maroon, Black.



Order your calendars by November 1st to ensure delivery before the end of the year.



Style #106
Rossette Diameter 4"
Rossette Button 2 1/4"
Streamer 2" x 7"
Overall Length 11"



Style #116
Rossette Diameter 4 1/2"
Rossette Button 2 1/4"
Side Streamers 1 5/8" x 10"
Center Streamer 2" x 10"
Overall Length 14 1/2"



Style #114
Rossette Diameter 3 3/4"
Rossette Button 2 1/4"
Side Streamers 1 5/8" x 6 3/4"
Center Streamer 2" x 6 3/4"
Overall Length 10 1/2"



Style 990002
Awareness Ribbons



Style #287-305
8 1/2" x 11"
Personalized Foil
Certificates

Custom Rosettes

Item Number	Quantity Prices (per each)				
	10-24	25-49	50-99	100-249	250+
106	3.99	3.92	3.41	3.30	3.10
116	5.24	4.55	4.32	4.07	3.76
144	5.00	4.43	3.53	3.36	3.07

(R)

- All sizes are approximate.
- Prices are based on one printed streamer.
- Rosettes come standard with a string back.

Custom Rosettes - Additional Charges

• 901601	Less Than Minimum Set-up	\$15.46	ea.
• 900101	Place/Roll Changes (3 Free)	\$ 1.18	ea.
• 900102	Class Change (Each)	\$ 2.97	ea.
• 900112	Major Copy Change (3+ Lines)	\$ 6.70	ea.
• 900106	Single Vertical Set-up	\$ 5.98	ea.
• 990016	Double Vertical Set-up	\$10.72	ea.
• 990017	Triple Vertical Set-up	\$14.29	ea.
• 901608	Long Form Set-up - Vertical 13+ Lines	\$15.46	ea.
• 901607	Long Form - Per Line Over 12	\$ 2.06	ea.
• 900114	Long Form Set-up - Horizontal 3+ Lines	\$10.31	ea.
• 901611	Additional Printed Streamers - Setup	\$ 9.59	ea.
• 901613	Additional Printed Streamers	\$ 0.21	ea.
• 900110	Extra Length - Per Inch - Per Streamer	\$ 0.07	ea.
• 901615	Fax Proof	\$15.46	ea.
• 902507	Color Print Other Than Gold/Silver	\$ 0.21	ea.
• 900111	Sewn with Fringe	\$ 1.10	ea.
• 901631	Tassels - Pair (Loose)	\$ 1.03	ea.
• 900107	Safety Pin Back	\$ 0.27	ea.
• 900108	Bridle Hook Back	\$ 0.43	ea.
• 990019	Mylar Button	\$ 0.17	ea.

(P)

Die charges begin at \$54.50(P) based on size. Call for quote.
Artwork composition charges start at \$60.00(P) per hour if art is not supplied.

Awareness Ribbons

Item Number	Quantity Prices (per each)		
	100-10,000	10,100-25,000	25,100 & Up
990002	0.33	0.29	0.23

(R)

- 5/8" thickness
- 3 1/2" finished size (approx.)
- Sewn with two way tape on back.

Additional Charges

- Safety Pin Back \$0.17 ea. (P)
- Call for a quote on printed Awareness Ribbons!

Available Colors: (Suggested Uses)

Pink - Cancer	Red - AIDS
Purple - Teen Violence	Blue - Abuse
Green - Environment	Yellow - Hope/Support
Black - Mourning	

Personalized Stock Certificates with Foil

Item Number	Quantity Prices (per each)					
	25-49	50-99	100-249	250-499	500-999	1,000+
287-305	0.87	0.76	0.69	0.65	0.63	0.60

(R)

Personalized Foil Certificates	Style 296.....Certificate of Merit
Style 287.....Certificate of Promotion	Style 297.....Special Recognition
Style 288.....Principals Award	Style 298.....Certificate of Participation
Style 289.....Perfect Attendance	Style 299.....Academic Excellence
Style 290.....Certificate of Achievement	Style 300.....Honor Roll
Style 291.....Certificate of Scholarship	Style 301.....Certificate of Citizenship
Style 292.....Certificate of Award	Style 302.....Completion
Style 293.....Excellence	Style 303....."A" Honor Roll
Style 294.....Certificate of Appreciation	Style 304....."A-B" Honor Roll
Style 295.....Outstanding Achievement	Style 305.....Certificate of Graduation

Stock Certificate Holder

Item Number	25-49	50-99	100-249	250-499	500+
279	0.93	0.89	0.84	0.71	0.65

- Ink print border colors are available in: Red, Blue, Green or Gold.
- See page 20 for stock certificate titles.
- Custom ink printed certificates are available, call for a quote.

Certificate & Certificate Holders - Additional Charges

- 902301 Customized Set-up: 1st Color \$113.30 ea.
- 902302 Each Additional Color \$ 79.31 ea.
- 902403 Die Charge \$70.00+ ea.
- 902507 Color Print Other Than Gold/Silver. \$ 0.21 ea. (P)

Die charges begin at \$54.50(P) based on size. Call for quote.
Artwork composition charges start at \$60.00(P) per hour if art is not supplied.



Style #279
9½" x 12"
Stock Certificate Holders
Gold Foil on Glossy White Stock

Stock Certificate Holder

Style	Size	25	50	75	100-199	200-299	300-399	400-499	500-599	1000+
900	1½" x 6"	35.05	42.85	52.37	57.13	46.41	44.03	42.15	41.75	41.02
901	1½" x 8"	36.20	44.03	53.56	59.52	47.61	46.41	44.94	44.20	42.63
902	2" x 6"	37.05	45.11	54.64	58.32	49.99	47.61	43.89	41.89	39.87
903	2" x 8"	37.89	45.37	54.89	60.59	50.81	48.09	46.41	45.23	42.85
904	2" x 10"	38.32	45.96	55.13	61.90	59.52	58.32	57.13	48.89	46.57
905	2" x 12"	40.82	48.79	58.32	66.66	64.28	63.08	61.90	52.37	49.99
906	2½" x 10"	39.60	49.99	63.08	70.23	66.66	65.46	64.28	53.18	50.19
907	2½" x 12"	41.89	52.37	65.46	73.80	71.42	69.04	67.85	62.04	52.35
908	2½" x 14"	44.57	54.75	67.25	78.57	76.19	73.77	72.61	68.92	58.32
909	3" x 12"	46.78	53.28	66.66	79.99	77.48	76.24	74.99	66.92	61.46
910	3" x 15"	49.13	59.97	80.95	95.24	92.86	91.66	90.47	76.21	71.44

- Price includes event card, eyelet and string, with printed overlay ribbon.
- Your choice of flat or peaked top and pinked or dove tail bottom.
- Minimum quantity is 100 to avoid set-up charge.
- Call for quote on any custom size or quantity not shown.

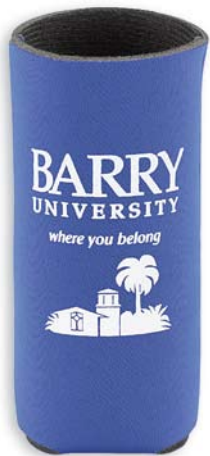
Custom Printed Ribbon, Overlay Style

Style	Size	25	50	75	100-199	200-299	300-399	400-499	500-599	1000+
600	1½" x 7" over 2" x 8"	60.32	69.58	80.71	92.77	91.44	88.35	88.35	87.46	85.23
601	1½" x 9" over 2" x 10"	68.92	79.52	92.24	106.02	104.03	102.05	100.05	99.47	97.00
602	2" x 9" over 2½" x 10"	79.26	91.44	106.06	121.93	119.95	117.95	115.97	113.98	112.58
603	2" x 11" over 2½" x 12"	84.43	97.41	113.01	129.87	127.89	125.10	123.92	121.93	120.34

- Price includes event card, eyelet and string, with printed overlay ribbon.
- Your choice of flat or peaked top and pinked or dove tail bottom.
- Minimum quantity is 100 to avoid set-up charge.
- Call for quote on any custom size or quantity not shown.



Your customers will carry your name to new destinations when they slip their bottle or canned drink into a personalized Koozie.



Collapsible Bottle Koozie
Fits 16 and 20 ounce bottles.
Price includes one-color direct screen imprint on one side only.
4 colors max.
Item Colors: Black, Red, Royal

Deluxe Collapsible Koozie
Tough, light, leather-like exterior.
Price includes a one-color direct screen imprint on two sides. 4 color max.
Item Colors: Red, Maroon, Purple, Navy, Black, Royal, Green, Yellow.

Collapsible Koozie
Fabric Exterior. Price includes a one-color direct screen imprint on two sides. 4 color max.
Item Colors: Royal, Bright Orange, Navy, White, Camouflage, Purple, Maroon, Lime Green, Burnt Orange, Black, Red, Yellow, Pink.

Original Koozie
Maintains a beverage can temperature of 40 degrees or below for 35 minutes or 3 times longer than a can without a koozie. Price includes a one-color direct screen imprint on two sides. 4 color max.
Item Colors: Royal, Lime, Burnt Orange, Black, Forest Green, Maroon, Navy, Scarlet, Yellow, Ivory.

Koozies

Item Number	Description	Size	Imprint Area	150	200	210	
31561002	Bottle Koozie	Flat 3 ³ / ₄ " W x 7 ¹ / ₂ " H	3" W x 4" H Screen or Transfer	1.95	--	--	Order in cases of 50
31569002	Deluxe Collapsible	Flat 3 ⁷ / ₈ " W x 5 ¹ / ₄ " H	3" W x 2 ¹ / ₂ " H Screen or Transfer	--	1.50	--	Order in cases of 100
31561001	Fabric Collapsible	Flat 3 ⁷ / ₈ " W x 5 ¹ / ₄ " H	3" W x 2 ¹ / ₂ " H Screen or Transfer	--	1.20	--	Order in cases of 100
31561000	Original	3 ³ / ₈ " D x 3 ⁷ / ₈ " H	4" W x 3" H Screen/3" W x 3" H Transfer	--	--	1.25	Order in cases of 105

Each Add'l Color Add: 0.65(R) Transfer: Add: 0.65(R) per color per side

Set-Up: \$58.00(V) per color per side.

Fax/E-mail Proof: \$12.50(V) Add 3 working days.

PMS: \$40.00(V).

Production: 7 working days after all approvals. Add 3 days for each add'l color.

Imprint Colors: Beige, Blue, Navy, Reflex, Brown, Yellow, Gray, Green, Maroon, Orange, Purple, Red, Teal, Black, White.

Neon Imprint Colors: Blue, Green, Yellow, Orange, Red, Pink.

Metallic Imprint Colors: Gold, Copper, Silver.

Note: Two or more colors require a transfer printing technique that allows for superior registration.

Ceramic Mugs

Item Number	36	72	144+
31562001 (11 oz.)	5.75	3.50	3.00
31562000 (10 oz.)	5.75	3.50	3.00
Each Add'l. Color ADD:	--	1.10	0.90

Set-up: \$50.00(V) per color/side.
Copy Change (144 min - 1 color only - 4 lines of type): \$37.50(V).
Ink Change (144 min): \$31.25(V).
Fax/E-Mail Proof: No charge. **Revisions:** \$37.50(V).
PMS: Will match as close as possible at no charge.
Production: 12 working days after all approvals.
Imprint Area: 10 oz - 2 5/16 h x 2 1/2 w, 11 oz - 2 11/16 h x 2 1/2 w
Mug Colors (10 oz.): White, Midnight Blue, Black, Green, Maroon, Almond.
Mug Colors (11 oz.): Yellow, Royal Blue, Maroon, Almond, Green, Black, Ocean Blue, Gray, White, Midnight Blue, Pink.
Note: Fine detailed artwork and multi-color tight registration may require a decal printing process. Additional charges will apply.



Travel Mug

Item Number	Size	Imprint Area	96	144	288+
31569004	16 oz. 6" H	2 5/8" W x 2 3/8" H per side wrap: 8" W x 2 3/8" H	4.53	3.25	2.99
Ea. Add'l Color/Location:			0.62	0.62	0.62

Set-up: \$58.00(V) per color/location.
PMS: \$40.00(V).
Fax/E-Mail Proof: \$12.50(V) Add 3 working days.
Production: 7 working days after all approvals. Add 3 working days for each additional color.
Price includes a one-color imprint on one side. Maximum one side is 3 colors. Maximum two sided & wraparound is 2 colors. Includes slide-lock lid.
Item Colors: Black, Silver, Vintage Blue, Sunset Red, Granite, Cabernet, Harvest Green, Pink.
Imprint Colors: 468 Beige, Black, White, 284 Blue, 300 Blue, 289 Navy, Reflex Blue, 293 Blue, 469 Brown, 123 Yellow, 432 Gray, 429 Gray, 350 Green, 347 Green, 202 Maroon, 165 Orange, 167 Orange, 189 Pink, 266 Purple, Warm Red, 180 Red, 200 Red, 328 Teal, 116 Yellow, 877 Metallic Silver, 872 Metallic Gold, 876 Metallic Copper.



Colored Acrylic/Stainless Tumbler

Item Number	Size	Imprint Area	48	144+
31569005	16 oz. 3 3/8" W x 7 1/16" H	3" W x 2 3/4" H per side wrap: 6 1/2" W x 2 3/4" H	8.95	8.27
Ea. Add'l Color/Location:			1.07	1.07

Set-up: \$58.00(V) per color/location.
PMS: \$40.00(V).
Fax/E-Mail Proof: \$12.50(V) Add 3 working days.
Production: 7 working days after all approvals. Add 3 working days for each additional color.
Price includes a one-color imprint on one side. Maximum one side is 3 colors. Maximum two sided & wraparound is 2 colors. Includes slide-lock lid.
Item Colors: Blue, Black, Red, Silver.
Imprint Colors: 468 Beige, Black, White, 284 Blue, 300 Blue, 289 Navy, Reflex Blue, 293 Blue, 469 Brown, 123 Yellow, 432 Gray, 429 Gray, 350 Green, 347 Green, 202 Maroon, 165 Orange, 167 Orange, 189 Pink, 266 Purple, Warm Red, 180 Red, 200 Red, 328 Teal, 116 Yellow, 877 Metallic Silver, 872 Metallic Gold, 876 Metallic Copper.





32 oz Sports Bottle

Item Number	250	500+
31560003 (Colored)	1.54	1.42
31560004 (Clear)	2.54	2.42
Ea. Add'l Color:	0.64	0.64

(R)

Set-up: \$56.25(V) per color.

PMS: \$45.00(V). PMS matches are not available on colored products.

Push-pull lids: Add .32(R) each.

Copy/Ink Change: \$31.25(V).

Production: 12 working days after all approvals.

Imprint Colors: White, Black, Dark Blue, Yellow, Red, Green, Granite, Clear.

Lid Colors: White, Black, Dark Blue, Red, Green.

Note: Bottles and lids do not match... contrasting colors are recommended.

Imprint Colors: Pantone Yellow, 116 Yellow, 172 Orange, 186 Red, 485 Red, Warm Red, Rubine Red, Rhodamine Red, Pantone Green, 3435 Green, Reflex Blue, Process Blue, 289 Navy, 327 Teal, 201 Burgundy, 273 Purple, 2603 Violet, 871 Metallic Gold, 877 Metallic Silver, 497 Brown.

Imprint Area: 6" h x 3.5" w, 6" h x 8.5" w wrap length.



Foam Cups

Item Number	Size	100	250	500	1,000	2,500+	5,000
31560000	8 oz	0.50	0.40	0.39	0.32	0.32	0.29
31580000	10 or 12 oz	0.52	0.44	0.40	0.37	0.37	0.34
31565001	16 oz	0.59	0.49	0.44	0.40	0.40	0.37
31580000	20 oz	0.60	0.49	0.45	0.44	0.42	0.40
2nd Color		0.47	0.39	0.35	0.32	0.32	0.30
2nd Side on 2-color		0.27	0.22	0.20	0.17	0.17	0.15

(R)

Set-up: \$32.00(V) per color.

PMS: \$32.00(V).

Copy/Ink Change: \$32.00(V).

Fax/E-Mail Proof: \$8.00(V) Add 5 working days.

Press Proof/Spec Sample: \$30.00(V) plus Set-up Charge.

Production: 8 working days.

Imprint Colors: 300 Blue, 297 Blue, Reflex, Process Blue, 477 Brown, 342 Green, 354 Green, 186 Red, Pantone Yellow, Warm Red, 208 Maroon, 165 Orange, Pantone Purple, 872 Metallic Gold (flat), 877 Metallic Silver (flat), 189 Pink, 281 Navy, Rubine Red, Rhodamine Red, Pantone Violet, Black.



Stadium Cups

Item Number	Description	250	500+
31567000	16 oz Smooth or Fluted	0.85	0.74
31567001	24 oz Smooth or Fluted	1.07	0.92
Ea. Add'l Color:		0.44	0.32

(R)

Set-up: \$56.25(V) per color.

PMS: \$45.00(V) NOT available on colored cups.

Copy/Ink Change: \$31.25(V).

Item Colors: White, Black, Dark Blue, Yellow, Red, Green, Purple, Teal, Granite.

Production: 12 working days after all approvals.

Imprint Colors: Pantone Yellow, 116 Yellow, 172 Orange, 186 Red, 485 Red, Warm Red, Rubine Red, Rhodamine Red, Pantone Green, 3435 Green, Reflex Blue, Process Blue, 289 Navy, 327 Teal, 201 Burgundy, 273 Purple, 2603 Violet, 871 Metallic Gold, 877 Metallic Silver, 497 Brown.

40 Pt. Pulpboard Coasters

Item Number	Size	Imprint Area	Price Per Piece					
			100	250	500	1,000	2,500	5,000
31584140	4" Square	3½" x 3½"	0.42	0.34	0.29	0.27	0.22	0.20
31584000	3½" Circle	3"Diam.	0.42	0.34	0.29	0.27	0.22	0.20
31584001	3½" Square	3" x 3"	0.42	0.34	0.29	0.27	0.22	0.20
31584002	3½" Scalloped	3"Diam.	0.42	0.34	0.29	0.27	0.22	0.20
31584145	3½" Octagon	3"Diam.	0.42	0.34	0.29	0.27	0.22	0.20
31584146	3½" #1	3" x 3"	0.42	0.34	0.29	0.27	0.22	0.20
31584147	3½" House	3" x 2½"	0.42	0.34	0.29	0.27	0.22	0.20
Each Add'l. Color (4 max)/2nd Side			0.30	0.25	0.20	0.17	0.17	0.14

Set-up: \$32.00(V) per color.
PMS: \$32.00(V) per color.
Copy Change/Ink Color Change: \$32.00(V).
Fax/E-Mail Proof: \$8.00(V) Add 3-5 working days.
Press Proof/Spec Sample (recommended when registration is critical): \$30.00(V) plus Set-up.
Production: 8 working days after all approvals.
Imprint Colors (uncoated): 300 Blue, 297 Blue, 281 Navy, Reflex, Process Blue, Black, 477 Brown, Pantone Yellow, 354 Green, 342 Green, 189 Pink, Pantone Purple, Pantone Violet, Rhodamine Red, Rubine Red, Warm Red, 186 Red, 208 Maroon, Black, 877 Metallic Silver (flat), 872 Metallic Gold (flat).



White 3-Ply Napkins

Item Number	Size	Imprint Area	Price Per Piece					
			100	250	500	1,000	2,500	5,000
31568000	Beverage 5"x 5"	3½" x 3½"	0.37	0.27	0.22	0.20	0.19	0.19
31568002	¼" Fold 8½" x 8½"	5" x 5"	0.52	0.39	0.30	0.27	0.27	0.25
31568001	⅙" Fold 4¼" x 8½"	5" x 3½"	0.52	0.39	0.30	0.27	0.27	0.25
2nd Color/2nd Location			0.20	0.15	0.14	0.12	0.12	0.10

Set-up: \$32.00(V) per color.
PMS: \$32.00(V).
Copy/Ink Change: \$32.00(V).
Fax/E-Mail Proof: \$8.00(V) Add 5 working days.
Press Proof/Spec Sample (recommended when registration is critical): \$30.00(V) plus Set-up Charge.
Production: 8 working days.
Imprint Colors (uncoated): 300 Blue, 297 Blue, Reflex, Process Blue, 477 Brown, 342 Green, 354 Green, 186 Red, Pantone Yellow, Warm Red, 208 Maroon, 165 Orange, Pantone Purple, 872 Metallic Gold (flat), 877 Metallic Silver (flat), 189 Pink, 281 Navy, Rubine Red, Rhodamine Red, Pantone Violet, Black.



Beverage Wrap

Item Number	Price Per Piece					
	100	250	500	1,000	2,500	5,000
31580000	0.62	0.52	0.47	0.44	0.44	0.42
Each Add'l Color		0.57	0.49	0.44	0.39	0.39

Smooth fits 10-16 oz cups.
 Waffle fits 12-20 oz cups.
 Choose from white or brown kraft.
 Smooth 2 color max Waffle 3-color (2500+).
Set-up: \$32.00(V) per color.
PMS: \$32.00(V).
Copy Change: \$32.00(V).
Fax/E-Mail Proof: \$8.00(V). Add 3-5 working days.
Press Proof/Spec Sample (recommended when registration is critical): \$30.00(V) plus Set-up Charge.
Imprint area: 2" h x 3.5" w.
Imprint Colors (uncoated): 300 Blue, 297 Blue, 281 Navy, Reflex, Process Blue, Black, 477 Brown, Pantone Yellow, 354 Green, 342 Green, 189 Pink, Pantone Purple, Pantone Violet, Rhodamine Red, Rubine Red, Warm Red, 186 Red, 208 Maroon, Black, 877 Metallic Silver (flat), 872 Metallic Gold (flat).
Printing on coffee sleeve: Our coffee sleeves are printed while folded flat, and are matched to proof in that manner. Once the sleeve has been placed on a cup for use the image will take on the shape of the cup and look tapered or slightly distorted. This will be especially noticeable on straight lines, lines of text, and large solid shapes. Because the corrugated surface is textured the imprint may show subtle tonal changes that appear as printed lines.
Note: Second side or wrap printing is not available





Lanyards

Item Number	Description	Price Per Piece	
		250	500+
31700014	3/8" W x 36" L	1.69	1.40
31700015	5/8" W x 36" L	1.72	1.45
31700016	3/4" W x 36" L	1.82	1.50
Ea. Add'l Color:		0.95	0.89

Set-up: \$56.25(V) per color.

Repeat Set-up: \$37.50(V) per color.

PMS: \$20.00(V).

Copy Change: \$56.25(V).

Ink Change: \$20.00(V).

Typeset: \$12.50(V) straight line copy only.

Production: 100 pieces – 12 working days, 300+ pieces – 15-21 working days.

Item Colors: Red, Burgundy, Orange, Yellow, Green, Royal Blue, Navy Blue, Lavender, Purple, Teal, Hunter Green, Gray, White, Black.

Standard Left & Right Imprint: 9/16" x 10 1/4".

Price includes choice of swivel hook, bulldog clip, swivel bulldog clip, split ring or rubber o-ring. Other attachments are available. Call for pricing.

Personal Care Items

Item Number	Description	100+
31580000	Shampoo	1.42
	Conditioner	1.42
	Liquid Soap	1.42
	Hand & Body Lotion	1.58
	Aloe Vera Gel	1.58
	Gel Sanitizer	1.49
	Breath Spray	2.14
	Glass Cleaner Spray	2.14
	Spray Sanitizer	2.14
	Custom Lip Balm	1.42
Ea. Add'l Color:		0.22

Set-up: \$60.00(V) per order.

PMS: Not available.

Production: 12 working days.

Imprint Colors: Black, 300 Blue, 072 Blue, 288 Navy, 186 Red, 209 Burgundy, 347 Green, 3435 Green, 172 Orange, 137 Yellow, 116 Yellow, 2613 Purple, 187 Red, Metallic Silver, Metallic Gold.

Imprint Area: 1.2791"H x 2.625"W. Lip Balm: 1.75" x 1".



Shampoo, Conditioner, Liquid Soap, Hand & Body Lotion, Aloe Vera Gel, Gel Sanitizer, Custom Lip Balm.



Breath Spray, Glass Cleaner Spray, Spray Sanitizer.

Neoprene holder with clips and personal care kits are available. Call for pricing.

Flyers (Frisbees)

Item Number	Size	Imprint Area	250	500+
31585500	7 1/4"	3 3/8" Diam.	1.14	1.05
31585500	5"	2 5/8" Diam.	0.74	0.64
Each Add'l. Color:			0.42	0.42

Set-up: \$60.00(V) per color.
Repeat Set-up: \$20.00(V) per color.
PMS: \$45.00(V) PMS matches are not available on colored product.
Production: 12 working days after all approvals.
Item Colors: White, Black, Dark Blue, Yellow, Red, Green, Orange.
Imprint Colors: Pantone Yellow, 172 Orange, 186 Red, Warm Red, Rubine Red, Rhodamine Red, Pantone Green, 3435 Green, Reflex Blue, Process Blue, 201 Burgundy, 273 Purple, 2603 Violet, 497 Brown, 289 Blue, 327 Teal, 871 Metallic Gold, 877 Metallic Silver.
Note: Specify size.



Vinyl Mini Sport Balls

Item Number	Size	Imprint Area	100	250	500+
31800000 Football	7"	2" x 1 1/4"	1.79	1.74	1.70
31800001 Basketball	4 1/4"	2 1/4" Diam.	1.79	1.74	1.70
31800010 Soccerball	4 1/4"	2 1/4" Diam.	1.79	1.74	1.70
31800020 Volleyball	4 1/4"	2 1/4" Diam.	1.79	1.74	1.70
2nd Side/Ea Add'l Color/Stripes			0.32	0.29	0.27

Plate Charge: \$25.00(V) per color per side.
PMS: \$65.00(V).
Production: 15 working days after all approvals.
Prices include a one-color imprint on one side. 4 color maximum. Minimum for 3 and 4 color imprints is 250. 2nd side prints on pebbled texture.
Item Colors: **Volleyball:** White, Red, Blue, Glow-in-the-Dark.
Basketball: Orange, Red, Blue, White, Gold, Purple, Green, Yellow, Glow-in-the-dark.
Soccer Ball: White, Red, Blue, Glow-in-the-Dark.
Football: Blue, White, Red, Yellow, Brown, Orange, Green, Purple, Gold, Glow-in-the-Dark.
Standard Imprint Colors: Black, White, Red, Royal Blue, Navy, Baby Blue, Green, Orange, Yellow, Purple, Brown, Gold, Silver, Maroon.
Note: During peak season, production times may be longer. Call for rush availability.



Stress Balls

Item Number	Size	250	500	1,000+
31058600	2 1/2"	1.69	1.67	1.64
Add'l Color/Location		0.50	0.47	0.45

Set-up: \$58.00(V) per color/location.
Fax/E-mail Proof: \$12.50(V) Add 3 working days.
PMS: No charge.
Copy/Ink Change: \$37.50(V) Increments of 250. Logo & location must remain same.
Production: 4-5 working days after all approvals.
Item Colors: Red, Blue, White, Green, Yellow, Tropical Blue.
Imprint Area: 1 1/4" W x 1 1/4" H.
Wrap: 3 1/2" W x 5/8" H (1-color only – requires additional set-up and location charges).
Note: No screens available.





20-stick Matchbooks

Item Number	Description	Price Per Case				
		1 case	2 cases	4 cases	10 cases	20 cases
31500000	Positive	139.44	132.22	125.14	117.77	113.19
	Reverse	155.55	150.00	142.77	135.84	131.25

Inside Cover Printing – ADD \$30.00(R) per case for all quantities

(R)

Set-up: \$31.25(V).

Fax Proof: \$31.25(V) Add 8 working days.

Production: 18 working days after all approvals.

Choose from: white stock with blue, red, green or black ink (positive) or blue, red, green or black stock with white ink (reverse). Also available is neon assortment of yellow, green, red and orange with black ink (positive) or red, light blue, green, white and yellow assortment with black ink (positive).

Imprint Area: 1 1/4" x 1 1/4" (front & back), 1 1/4" x 3/16" (saddle & security flap)

Note: Each case contains 2500 books. Order will print positive unless reverse is specified.

Emery Boards

Item Number	750	1,500	3,000	6,000	12,000	25,000	50,000
31584500	0.37	0.27	0.19	0.17	0.14	0.12	0.12

(R)

Set-up: \$25.00(V).

Fax/E-mail Proof: \$10.00(V) Add 5 working days.

Production: 8 working days after all approvals.

Size: 4 7/8" x 1 1/2"

Imprint Area: 4" x 3/8"

Item Color: White.

Imprint Colors: Red, Green, Blue, Black, Burgundy.



VOTE **JIM REBBER** City Council

STATEWIDE TITLE, INC
Salisbury (704) 637-1027 Greenville (919) 321-0050



Buttons

Item Number	Description	100	250	500	1,000+
31580000	2 1/4" Round	1.72	0.94	0.65	0.57
31580000	3 1/2" Round	2.24	1.37	1.07	0.97
31580000	2" x 3" Rectangle	1.97	1.10	0.82	0.72

(R)

Two-piece button with a safety pin back.

Proof: 15.00(V) Add 5 working days.

Production: 10 working days, after all approvals.

Note: All PMS colors will be converted to the closest 4CP match.

*Great for political
campaign rallies!*

Hand Fans

Item Number	250	500	1,000	2,500	5,000
31541000	0.99	0.72	0.57	0.47	0.44
2nd Side/Ea Add'l Color	0.35	0.19	0.14	0.12	0.10

Plate Charge: \$47.50(V) per color per side.

PMS: \$32.00(V).

Fax/E-Mail Proof: \$15.00(V) Add 5 working days.

Glued Handles: Add \$0.25(R) each.

Production: 12 working days after all approvals.

White, 18 pt. stock, coated one side. Wooden handles are stapled on back side (allow 1¼" x 4" at bottom center when printing on back side).

Imprint Colors: Black, White, 471 Brown, 168 Brown, 185 Red, Rhodamine Red, Rubine Red, Warm Red, 208 Maroon, 165 Orange, Pantone Yellow, 347 Green, 3435 Green, 320 Teal, Process Blue, Reflex, 281 Navy, Pantone Purple, 266 Purple, 873 Metallic Gold, 877 Metallic Silver, 123 Yellow.

Note: Production time will be increased during peak season.



Fan Shapes:



9" Round



Litho Shape



Heart



Shamrock



Cowboy Hat



House



Apple



Telephone



Octagon



7" Round



Palm Shape



Number One



Square



Hour Glass



Campaign Hand Fans, call for pricing.



9" and 11" Balloons

Item Number	Description	Imprint Area	100	250	500	1,000+
31540000	9" Standard	5¼" Diam.	0.92	0.42	0.34	0.22
31540001	11" Standard	5¾" Diam.	1.19	0.54	0.37	0.24
31540100	9" Crystal	5¼" Diam.	0.92	0.42	0.34	0.22
31540101	11" Crystal	5¾" Diam.	1.19	0.54	0.37	0.24
2nd Side/Ea. Add'l. Color:			--	--	--	0.09

(R)

Set-up/Repeat Set-up: \$40.00(V) per color per side.

PMS: We will match any PMS color as close as possible at no charge.

Ink Color/Copy Change: \$15.00(V).

Production: 10 working days after all approvals.

Standard Colors: Red, White, Baby Blue, Royal Blue, Orange, Pink, Green, Yellow.

Crystal Colors: Ruby Red, Midnight Blue, Forest Green, Deep Purple, Black, Clear, Lemon Yellow, Burgundy.

Note: Allow 1/8" to 1/4" separation between colors. 4 color maximum.

18" Mylar Balloons

Item Number	Description	50	100	250	500	1,000+
31580000	18" Mylar Balloon	2.50	2.00	1.90	1.80	1.70
2nd Side		--	--	0.50	0.50	0.50
2nd Color		--	--	0.50	0.50	0.50

(R)

Set-up/Repeat Set-up: \$45.00(V) per color per imprint/imprint color.

PMS: \$45.00(V).

Production: 10 working days after all approvals.

Imprint Area: Round 12" diameter, Heart/Star: 10" diameter.

Color Registration: Exact registration cannot be guaranteed.

Mylar Balloon Colors: If balloon color match is critical, please call for sample.

Star: Blue, White, Red, Gold, Silver

Heart: Pink, Red, White, Blue, Purple, Gold, Silver.

Round: Black, White, Blue, Green, Purple, Red, Pink, Yellow, Gold, Silver.

Imprint Colors: Black, White, Red, Royal Blue, Navy Blue, Baby Blue, Green, Forest Green, Orange, Yellow, Purple, Brown, Silver, Maroon.

Imprint Process: Zenith silk-screen printing.



Natural Wooden Nickels

Item Number	Size	Imprint Area	1,000	2,500	5,000	10,000	25,000
31583000	1½"Diam.	1¼"Diam.	0.24	0.19	0.19	0.17	0.17



Set-up Charge: \$40.00(V).
Custom 2nd Side Charge: \$40.00(V) set-up PLUS \$0.04(R) each run charge.
Proof: \$20.00(R).
Production: 7 working days after all approvals.
Price includes a one-color imprint on one side and stock design on second side.
Imprint Colors: Black, White, 469 Brown, 208 Burgundy, 349 Green, 354 Green, 300 Blue, 202 Maroon, 289 Navy, 165 Orange, 267 Purple, 286 Blue, 320 Teal, 877 Metallic Silver, 280 Blue, 123 Yellow, 871 Metallic Gold.
Note: Front and back imprint do not register.

Keep-it Clips

Item Number	Size	Imprint Area	250	500	1,000+
31581000	4"	½"W x 3¾"H	1.08	0.96	0.90
Ea. Add'l. Color/Location:			0.32	0.32	0.32



Set-up: \$50.00(V) per color per location.
PMS: \$50.00(V).
Fax/E-Mail Proof: No charge. Add 5 working days.
Production: 7 working days after all approvals.
Magnet: \$.15(V).
4" clip is constructed of durable high-impact styrene.
Price includes one-color, one position imprint.
Item Colors: Red, Blue, Dark Blue, Purple, Orange, Yellow, Green, Dark Green, Black, White, Pink, Sage, Salsa, Antique Blue, Light Gray, Coffee.
Translucent Item Colors: Red, Blue, Green, Purple, Frost, Orange, Smoke, Lime Green, Pink, Yellow, Aqua, Sky Blue, Bright Coral.
Imprint Colors: Black, White, 123 Yellow, 186 Red, 202 Burgundy, 259 Purple, 286 Blue, Reflex, Process Blue, 289 Navy, 343 Green, 3278 Teal, 307 Blue, 806 Neon Pink, 348 Green, 166 Orange, 476 Brown, Cool Gray 10, Metallic Gold, Metallic Silver.
Note: Order up to 4 assorted colors at no charge.

Playing Cards

Item Number	Size	Imprint Area	50+
31058613 (Poker)	2½" x 3½"	1¾" x 2⅞" 1-color, 1½" x 2⅞" 2-color	5.57
31058612 (Bridge)	2¼" x 3½"	1¾" x 2⅞" 1-color, 1½" x 2⅞" 2-color	5.27
For 2-Color ADD			2.15



Set-up/Repeat Set-up: \$25.00(V) per color.
PMS: Not Available.
Fax/E-mail Proof: \$10.00(V) Add 5 working days.
Production: 18 working days after all approvals.
Price includes a one-color hot-stamped imprint on 2 ply plastic coated stock. Regular or Super Pip face style available.
Card Background Colors: Red, White, Green, Black, Royal Blue, Burgundy, Navy.
Imprint Colors: Red, White, Sky Blue, Green, Yellow, Hunter Green, Pink, Brown, Black, Burgundy, Orange, Hot Pink, Blue.
Metallic Imprint Colors: Red, Teal, Green, Blue, Purple, Bronze, Gold, Silver, Pink, Hot Pink.
Note: Cards are packaged in a tuck box with cellophane window.

Bridge Colors



Poker Colors





Die-Cut Handle Bags

Item Number	Size	Imprint Area	100	250	500-5,000	Plate Charge
31950001	9½"W x 12"H	6"W x 6"H	1.07	0.47	0.34	89.00(V)
31950002	12"W x 15"H x 3"	8"W x 8"H	1.20	0.62	0.47	142.00(V)
31950015	15"W x 19"H x 3"	9"W x 9"H	1.49	0.74	0.57	180.00(V)
31950003	18"W x 20"H x 4"	10"W x 10"H	1.54	0.94	0.74	220.00(V)

2nd Color or 2nd Side ADD: 0.24(R)

(R)

PMS: \$75.00(V).

Typeset: \$4.00(V) per line over 5.

Production: 9 working days after all approvals. 7 working days for exact repeats.

Plastic 2.5 mil bags with fold-over reinforced die-cut handles. Price includes a one-color ink imprint on one side.

Plate charge is per color per side.

Item Colors: White, Buff, Clear, Red, Yellow, Gray, Bright Blue, Pink.

Imprint Colors: White, Black, Pantone Yellow, 021 Orange, 032 Red, 199 Red, 201 Maroon, 208 Burgundy,

215 Cranberry, Rubine Red, Rhodamine Red, Pantone Violet, Pantone Purple, 072 Blue, Reflex, 282 Navy, 293 Blue, Process Blue, Pantone Green, 349 Green, 354 Green, 320 Teal, 469 Brown.

Note: Art requires ½" space between colors on 2-color imprints and must be pre-approved.



Bargin Bags

Item Number	100+
31950012	3.05
Each Add'l. Color – Side 1 ADD:	0.74
Each Color – Side 2 ADD:	1.15

(R)

Set-up: \$58.00(V) per color per side.

PMS: No Charge.

Fax/E-Mail Proof: \$12.50(V) Add 5 working days.

Production: 10 working days after all approvals.

Natural 8 oz. cotton bag with colored 15" handles. Price includes a one-color silkscreen imprint on one side.

Size: 13"W x 15½"H

Imprint Area: 9"W x 10"H front or back. Maximum 4 colors.

Handle Colors: Black, Red, Royal, Navy, Dark Green, Natural.

Imprint Colors: Black, Reflex, 287 Blue, 2767 Navy, 2995 Blue, 483 Brown, 109 Yellow, 355 Green, 429 Gray, 432 Gray, 202 Maroon, 165 Orange, Warm Red, 267 Purple, 186 Red, 194 Red, 3125 Teal, White, 123 Yellow, 107 Yellow, 871 Gold, 874 Gold, 872 Gold, 877 Silver.



Shopping Bags

Item Number	Imprint Area	Size	100	250	500-5,000	Plate Charge
31950004	6"W x 5"H	7¾"W x 9¾"H x 4¾"	1.37	0.72	0.57	66.00(V)
31950006	7"W x 7"H	10"W x 13"H x 5"	1.35	0.67	0.57	108.00(V)
31950016	9"W x 7"H	13"W x 15¾"H x 6"	1.49	0.77	0.59	140.00(V)
31950008	10"W x 5"H	16"W x 12"H x 6"	1.47	0.77	0.62	110.00(V)
31950005	6"W x 5"H	7¾"W x 9¾"H x 4¾"	1.47	0.77	0.62	66.00(V)
31950007	7"W x 7"H	10"W x 13"H x 5"	1.40	0.72	0.57	108.00(V)
31950017	9"W x 7"H	13"W x 15¾"H x 6"	1.49	0.85	0.67	140.00(V)
31950009	10"W x 5"H	16"W x 12"H x 6"	1.54	0.79	0.69	110.00(V)

2nd Color or 2nd Side ADD: 0.24(R)

(R)

PMS: \$75.00(V).

Typeset: \$4.00(V) per line over 5.

Production: 9 working days after all approvals. 7 working days for exact repeats.

Brown or white kraft paper bags with matching twisted paper handles and serrated cut top. Price includes a one-color ink imprint on one side. Plate charge is per color per side.

Imprint Colors: White, Black, Pantone Yellow, 021 Orange, 032 Red, 199 Red, 201 Maroon, 208 Burgundy, 215 Cranberry, Rubine Red, Rhodamine Red, Pantone Violet, Pantone Purple, 072 Blue, Reflex, 282 Navy, 293 Blue, Process Blue, Pantone Green, 349 Green, 354 Green, 320 Teal, 469 Brown.

Note: Art requires 1/2" space between colors on 2-color imprints and must be pre-approved.

Tote Bags

Item Number	Size (handles)	Imprint Area	100	250	500+
31500019	13" x 5" x 13" (18")	8"W x 8"H	2.94	2.32	1.91
31500018	16" x 6" x 12" (18")	12"W x 8"H	3.09	2.48	2.06
31500020	16" x 6" x 12" (28")	12"W x 8"H	3.29	2.60	2.18
31500017	20" x 6" x 16" (28")	14"W x 10"H	3.41	2.69	2.29

Add'l. Color/Side: 0.49(R)

(R)

Set-up: \$50.00(V) per color per side. (2 color maximum)

Typeset: \$4.00(V) per line over 5.

PMS: Not available.

Production: 9 working days after all approvals. 7 working days for exact repeats.

Item Colors: Red, Royal Blue, Black, Hunter Green, White, Orange, Lime, Yellow, Blue, Grape, Burgundy. Not all colors available in all sizes.

Imprint Colors: White, Black, Pantone Yellow, 021 Orange, Gold, Silver, Violet, Pantone Purple, Navy, 292 Blue, Process Blue, 286 Blue, Cool Gray 7, 347 Green, 320 Teal, Neon Green, Neon Pink, Marigold, Scarlett Red, Maroon, Dark Green, Khaki Tan, Champagne Gold, Brown.

Note: Two-color imprints must be pre-approved for registration requirements. Must be 1/2" space between colors.

Made from sturdy 80 grams per square meter (GSM*) premium quality non-woven polypropylene, 100% recyclable and reusable, with stitched seams, side and bottom gussets, reinforced sewn handles, and hemmed opening. These tear resistant and water repellent bags are made from recycled material. Silk screen imprint.

*GSM is the standard measurement for weight and quality of material. Higher GSM values represent stronger, more durable polypropylene resulting in greater reusability. Our polypropylene exceeds all accepted industry and global standards for quality and strength.





Key Tags

Item Number	Size	Imprint Area	250	500	1,000+
Group 1			0.72	0.69	0.67
31700000 Standard	1 3/8" x 2 1/8"	1 1/4" x 2"			
31700004 #1	1 1/2" x 2 1/4"	1 1/16" x 2 1/16"			
31700001 House	1 5/8" x 2"	1 1/2" x 1 1/2"			
31700007 Square	1 5/8" x 1 5/8"	1 1/2" x 1 1/2"			
Group 2			0.77	0.74	0.72
31700006 Round	2 1/4" Diam.	2 1/16" Diam.			
31700003 States	Varies	Varies			
31700005 Rectangle	1 1/4" x 2 1/2"	1 1/8" x 2 3/8"			
31700002 Heart	2" x 2"	1 7/8" x 1 7/8"			
31700009 Octagon	1 3/4" x 1 3/4"	1 5/8" x 1 5/8"			
31700008 Star	1 3/4" x 1 3/4"	1 5/8" x 1 5/8"			
Add'l Color			N/A	0.15	0.14
2nd Side			0.17	0.15	0.14

Set-up/Repeat Set-up: \$15.00(V).

Fax/E-mail Proof: \$10.00(V) Add 3 working days.

PMS: \$20.00(V).

Production: 12 working days after all approvals.

Soft-touch vinyl with a high gloss finish. Price includes a one-color imprint on one side.

Opaque Item Colors: White, Black, Gray, Yellow, Creme, Green, Red, Teal, Blue, Purple.

Translucent Item Colors: Red, Blue, Green, Neon Pink, Neon Orange, Neon Green.

Imprint Colors: Process Blue, Reflex Blue, Medium Blue, Dark Blue, Gray, Medium Green, Dark Green, Burgundy, Purple, Red, Teal, Yellow, Gold, White, Black.

Note: Minimum 2 color imprint is 500. Minimum 3 color imprint is 1,000.

Bic Pocket Light

Bic Key Ring Lights

Item Number	150+
31700010 (Key Ring Light)	1.96
31058614 (Pocket Light)	2.77
Ea Add'l Color	0.17

PMS: \$35.00(V).

Fax/E-Mail Proof: \$10.00(V). Add 5 working days.

Production Time: 7 working days after all approvals.

Imprint Area: Pocket Light 2" x 3/4" Opposite of Clip (Option 1)

1 1/4" x 1/4" Aligned with Clip (Option 2)

Key Ring Light 1 3/4" x 3/4"

Pocket Light Colors: White, Red, Blue, Black.

Key Ring Light Colors: White, Red, Blue, Black, Yellow. Clear Colors: Purple, Green, Blue, Red.

Imprint Colors: Black, White, Red, Yellow, Orange, Pink, Navy, Reflex, Process Blue, Purple, Burgundy, Maroon, Green, Teal, Forest Green, Brown, Charcoal, Cream.

Metallic Imprint Colors: Blue, Gold, Copper, Green, Magenta, Silver.

Note: Option 1 will be used on pocket lights if not specified.



Carabiner Keyholder – Laser Engraved

Item Number	Size	Imprint Area	250
31700013	5 5/8" L x 1 5/8" W x 5/16" D	1 1/16" W x 1/8" H	1.37
Additional Location ADD:			1.02

Set-up Charge: \$58.00(V) per location.

Fax/E-mail Proof: \$12.50(V) Add 5 working days.

Production: 8 working days after all approvals.

Item Colors: Black, Royal Blue, Orange, Silver, Gold, Violet, Green, Red.

Note: Carabiner is made from aluminum and is not intended for climbing purposes.

Price includes a one-position laser engraved imprint.

Production Time

Production times are based on current capacity and are subject to revision at the time the order is placed. Production begins the day after a complete order is received, which includes usable artwork and credit approval. Orders and/or artwork received after 3 p.m. CST are considered received the next business day. If a proof is requested, production will begin after the proof is approved.

Changes and Cancellations

All orders received are considered firm. Cancellations must be in writing and will be charged a minimum fee of \$45.00(V) and are subject to all incurred costs, including set-up, plate and art charges. An order cannot be cancelled once printing has begun. All changes to an order must be in writing and any charges incurred to make that change are billable.

Overruns/Underruns

Every order is subject to 10% over or under and will be billed accordingly. You may request exact quantities for an additional 10% charge.

PMS Color Match

Due to the different printing processes used and the various surfaces printed on, exact PMS matches cannot be guaranteed. Colors of products illustrated in catalog are approximations.

Rush Orders

Rushes, if available, cannot be quoted until the order is received and artwork and credit is approved. If you have an event date, make sure it is clearly noted on your purchase order. You will be contacted if there will be extra charges or if expedited shipping is necessary to meet your event.

Shipping

Shipping charges are always additional. Incorrect or incomplete shipping addresses will incur additional charges. Shipments to multiple locations and special packaging are available for an added charge. Call for pricing.

E-Mailed Artwork

Please refer to the following guidelines when sending electronic artwork. We accept PC or MAC.

For graphics and text, use Adobe Illustrator (CS or below). Save as an EPS or AI file. Convert all text to outlines by selecting 'Create Outlines'. This eliminates our need to have your fonts. If your file contains a raster image, make sure the resolution is set at 600 dpi. Text should be 800 dpi.

For photographs or photo-type files, use Adobe PhotoShop (7 or below). Save as a TIFF or EPS file. Resolution should be at 600 dpi for color images at 100% of final size. Four-color process images should be CMYK color mode, not RGB. Converting RGB or Pantone files to CMYK may cause colors to shift.

Use Corel Draw (version 10 or below) for graphics and text. Export as an EPS file. Convert text to outlines by selecting 'Convert to Curves'. This eliminates our need to have your fonts.

For Quark Express (5 or below) save as an EPS file and be sure to enclose all images. Include all font files (printer and screen fonts). When adding images to your layout ('Get Picture' option), make sure the resolution is set at 600 dpi. Send all images imported into your Quark file. Text should be 800 dpi.

We can use PDF files for one-color imprints only. We cannot use screened PDF's. Send the file as 100% black and advise the screen percentages we should assign to the image. Word documents are not acceptable as artwork.

Always fax a hard copy of your e-mailed artwork. Sometimes files become corrupt and the received art is not exactly as sent. We should always have a hard copy to verify the artwork is correct.

Prices are effective January through December 2008. All prices include a one-color one-position imprint unless otherwise noted. Prices, conditions and specifications are subject to change without notice. We reserve the right to correct any errors or omissions in the catalog. We also reserve the right to refuse any order and we assume no liability for trademark or copyright infringement. We are not responsible for delays beyond our control which include acts of God, acts of war, terrorism, earthquake, fire, flood, hurricane, equipment breakdown or delays of suppliers or freight carriers.



Design and Manufacture of Anything With Ink on It!

www.dayledesigns.biz • dayledesigns@comcast.net
8518 Kimmie St. SW • Olympia, Washington 98512

Phone/Fax **360-352-4051**

**Dayle
Designs**